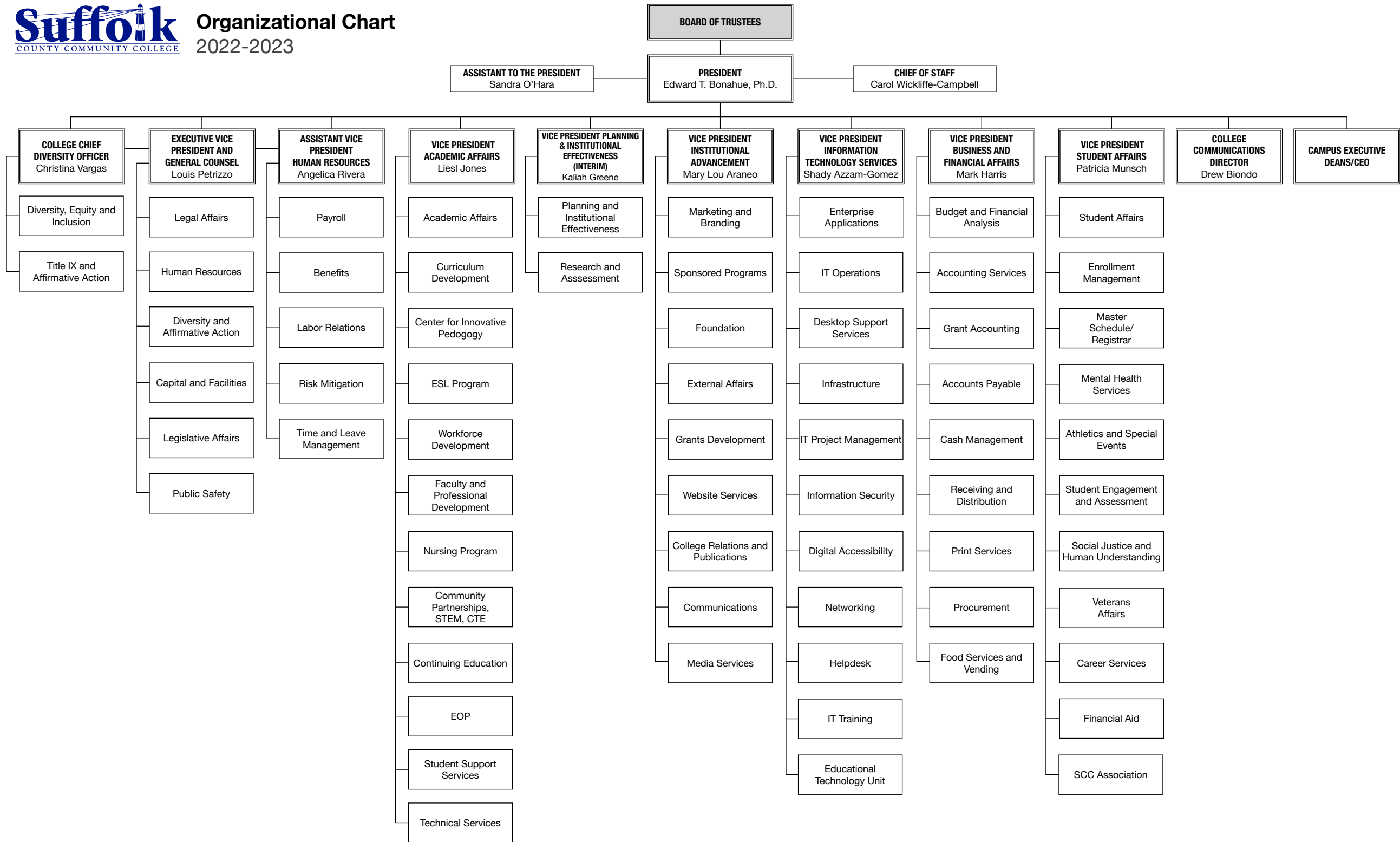


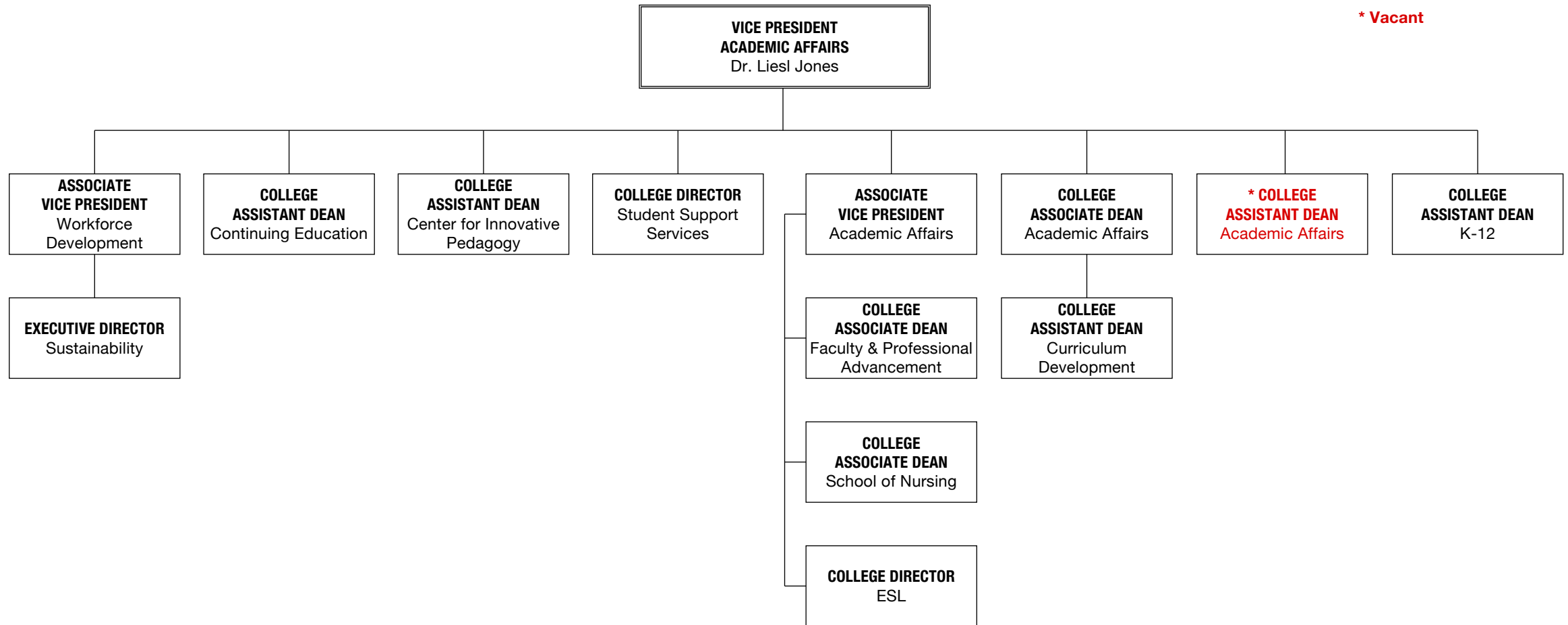


# Organizational Chart

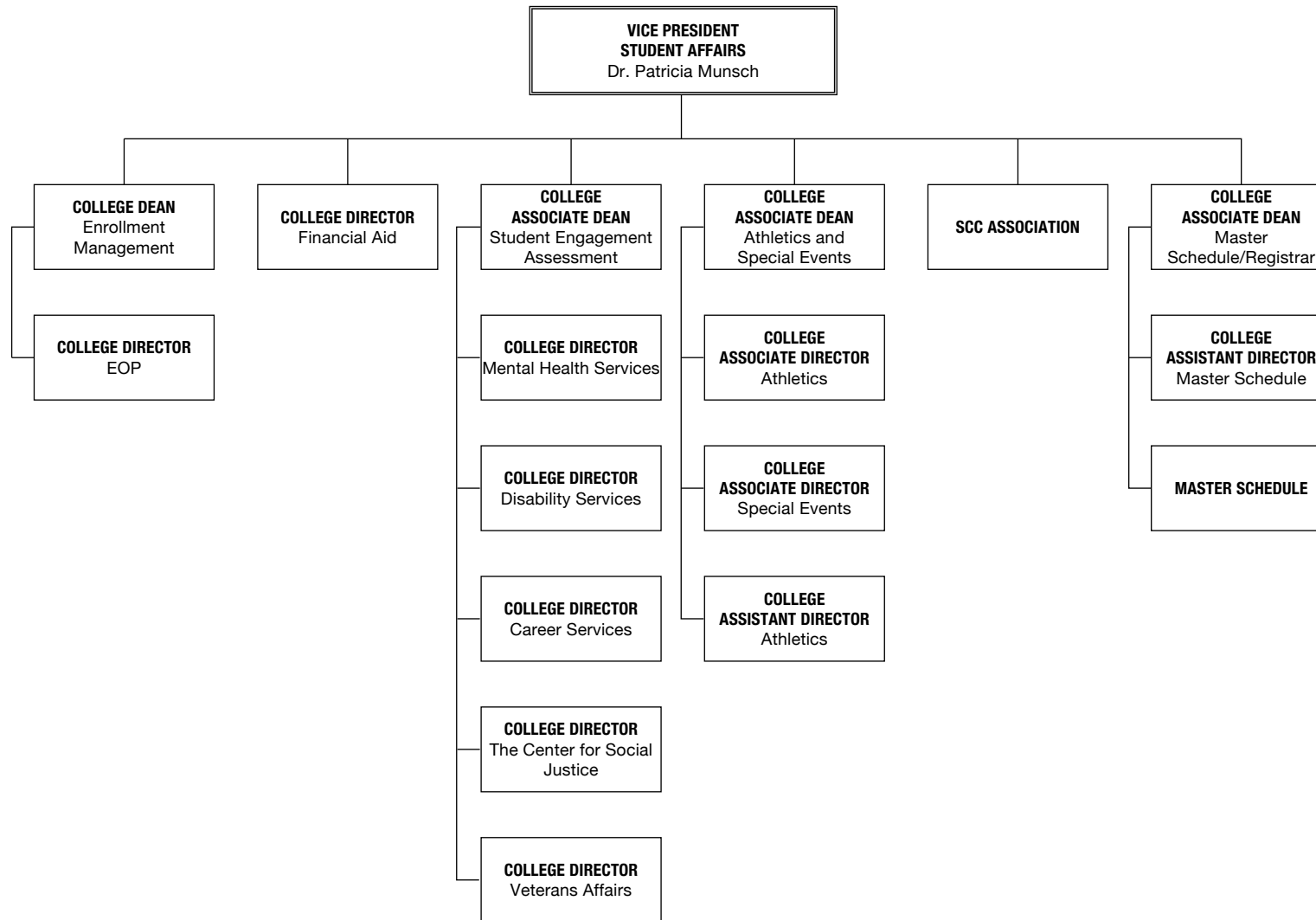
2022-2023



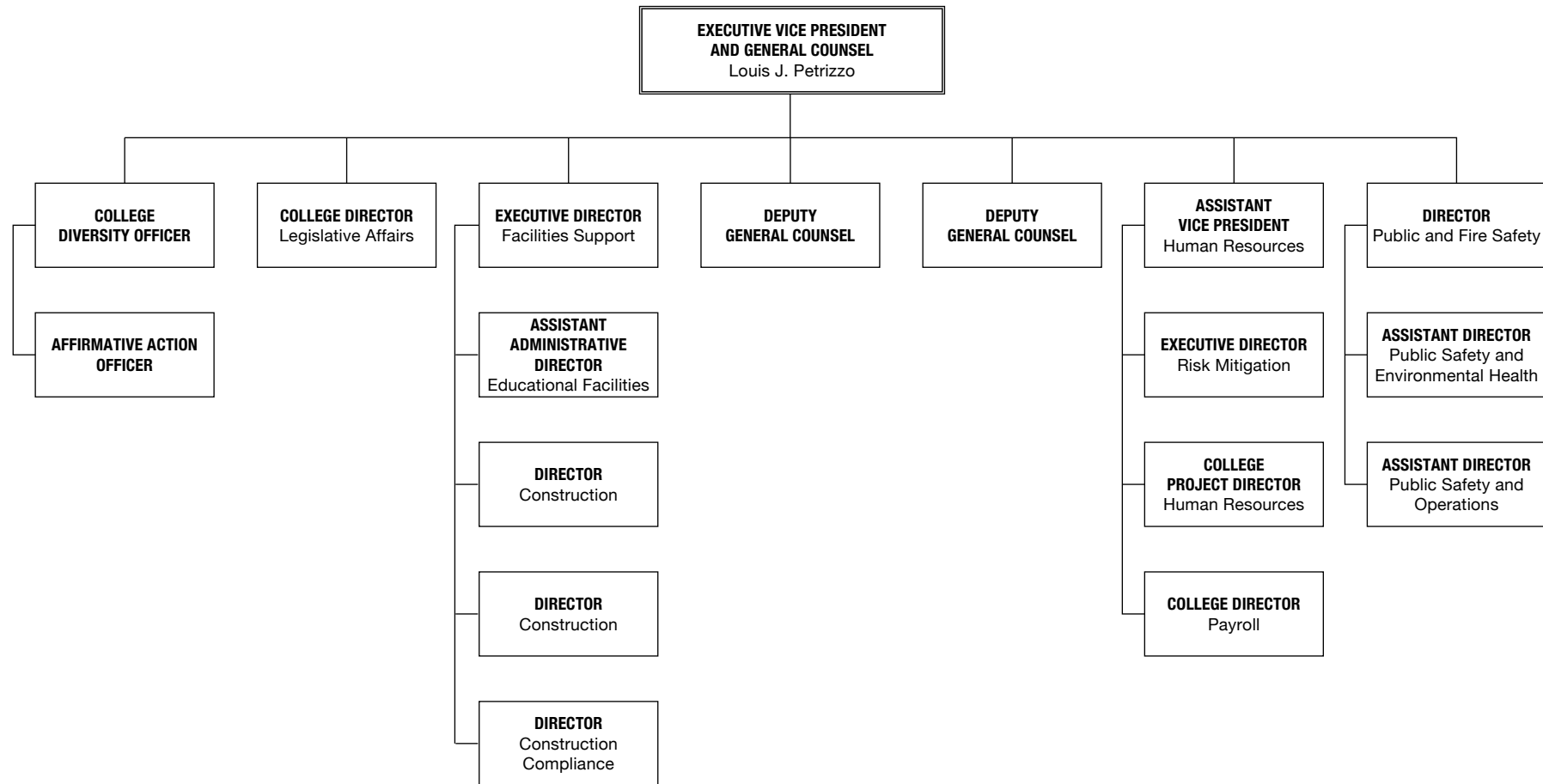
# Academic Affairs



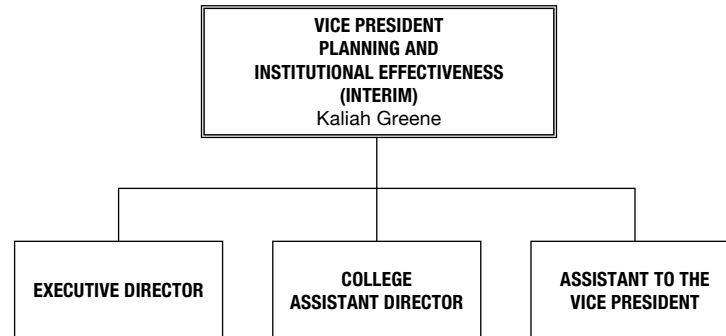
# Student Affairs



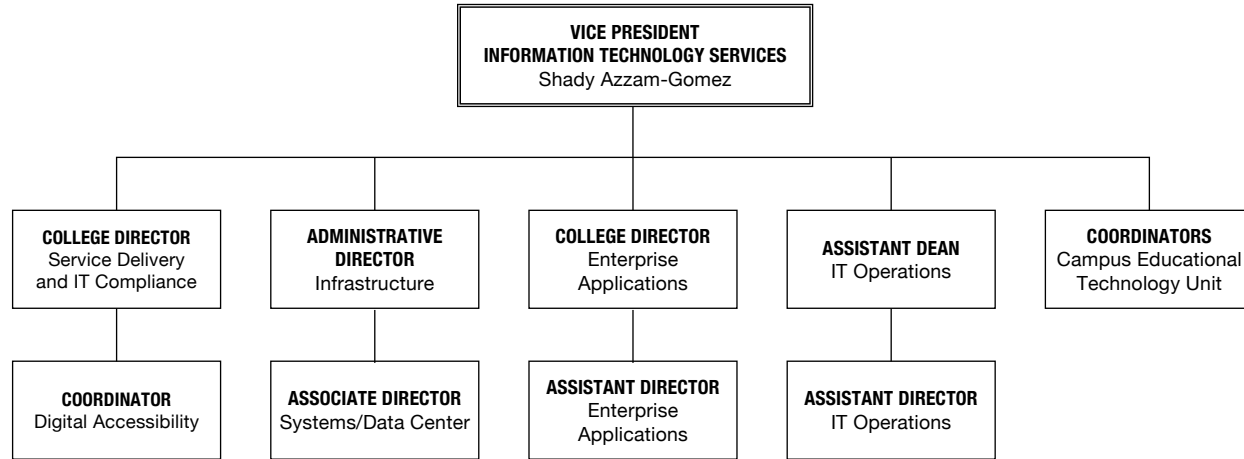
# Legal Affairs



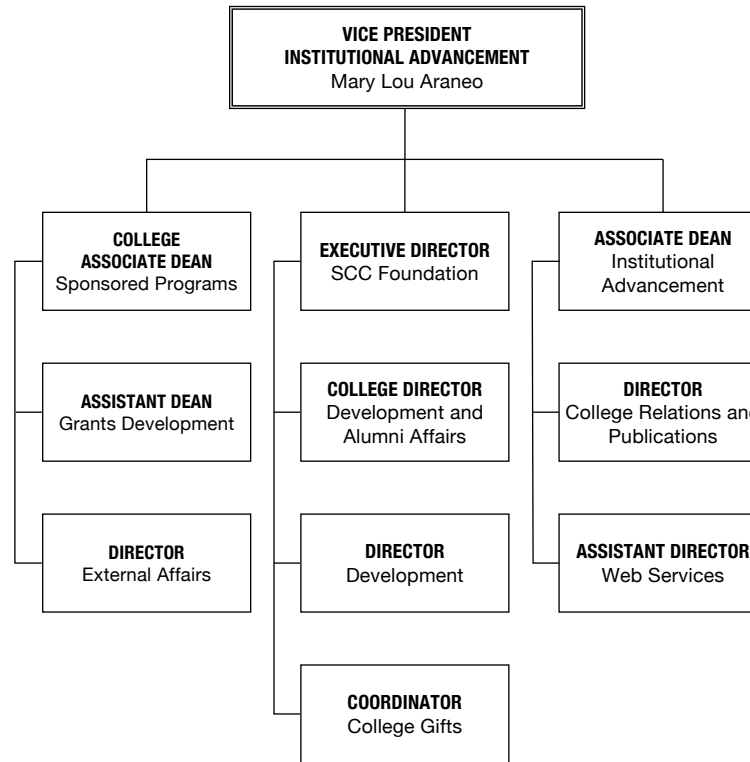
# Planning and Institutional Effectiveness



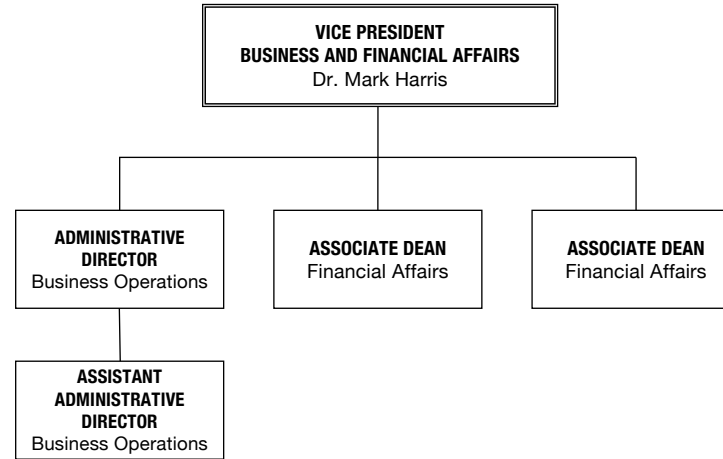
# Information Technology Services



# Institutional Advancement

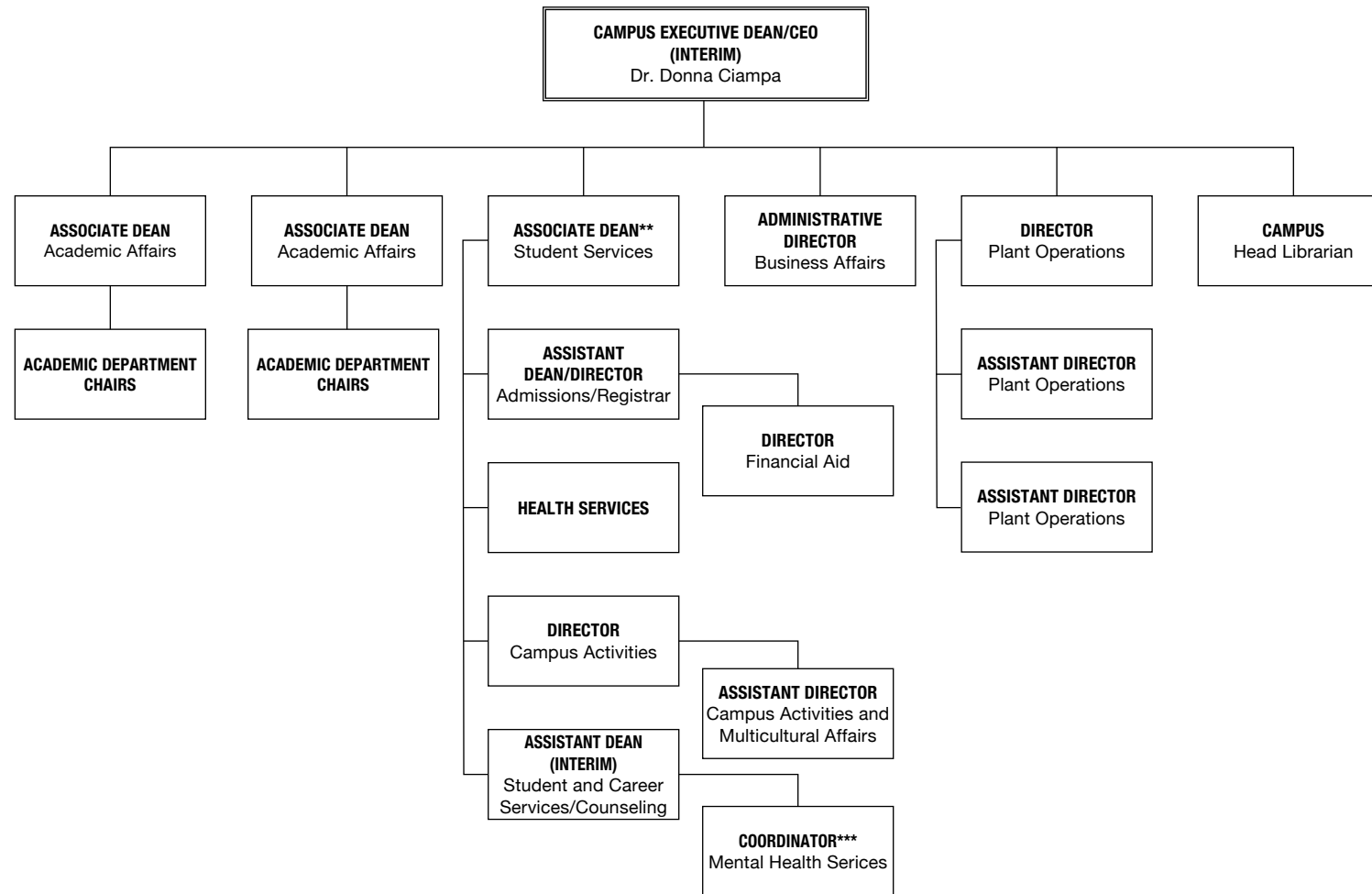


# Business and Financial Affairs





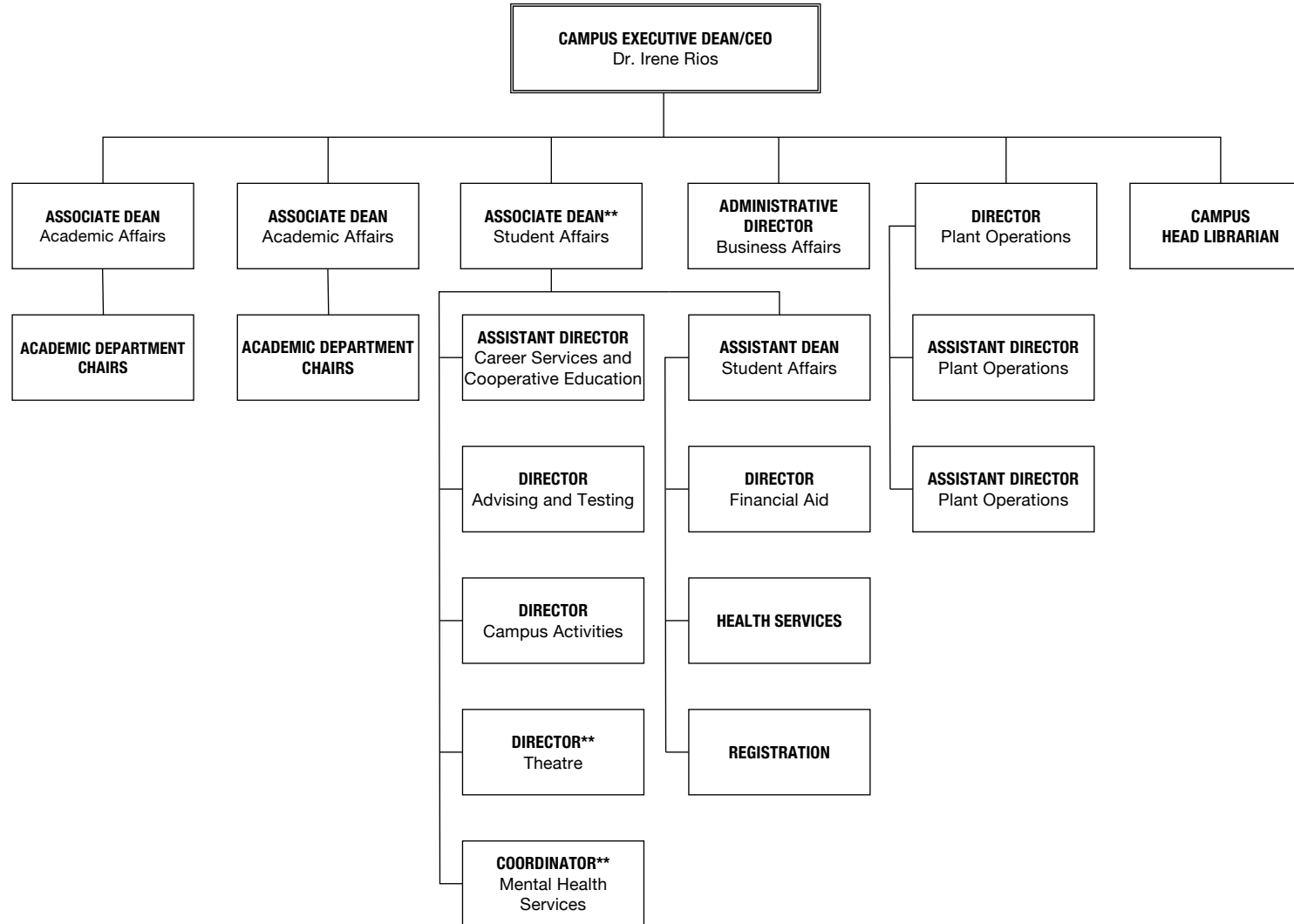
# Michael J. Grant Campus



\*\* Reports to the VP of Student Affairs for matters of policy and programming.

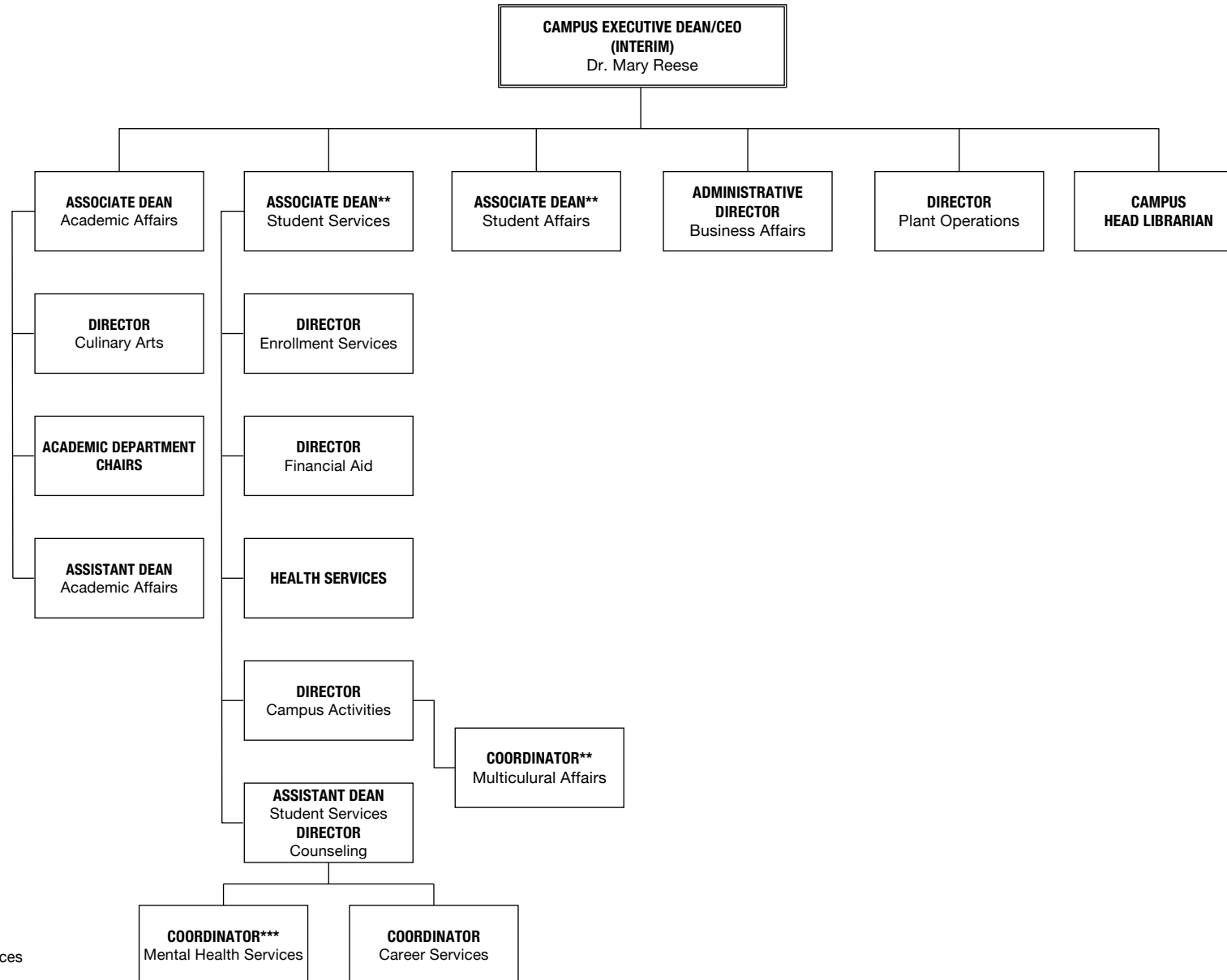
\*\*\* Reports to the Associate Dean of Mental Health Services for matters of policy and programming.

# Ammerman Campus



\*\* Reports to the VP of Student Affairs for matters of policy and programming.

# Eastern Campus



\*\* Reports to the VP of Student Affairs for matters of policy and programming.

\*\*\* Reports to the Associate Dean of Mental Health Services for matters of policy and programming.