

# SUFFOLK COUNTY COMMUNITY COLLEGE

2018-2019 ACADEMIC YEAR

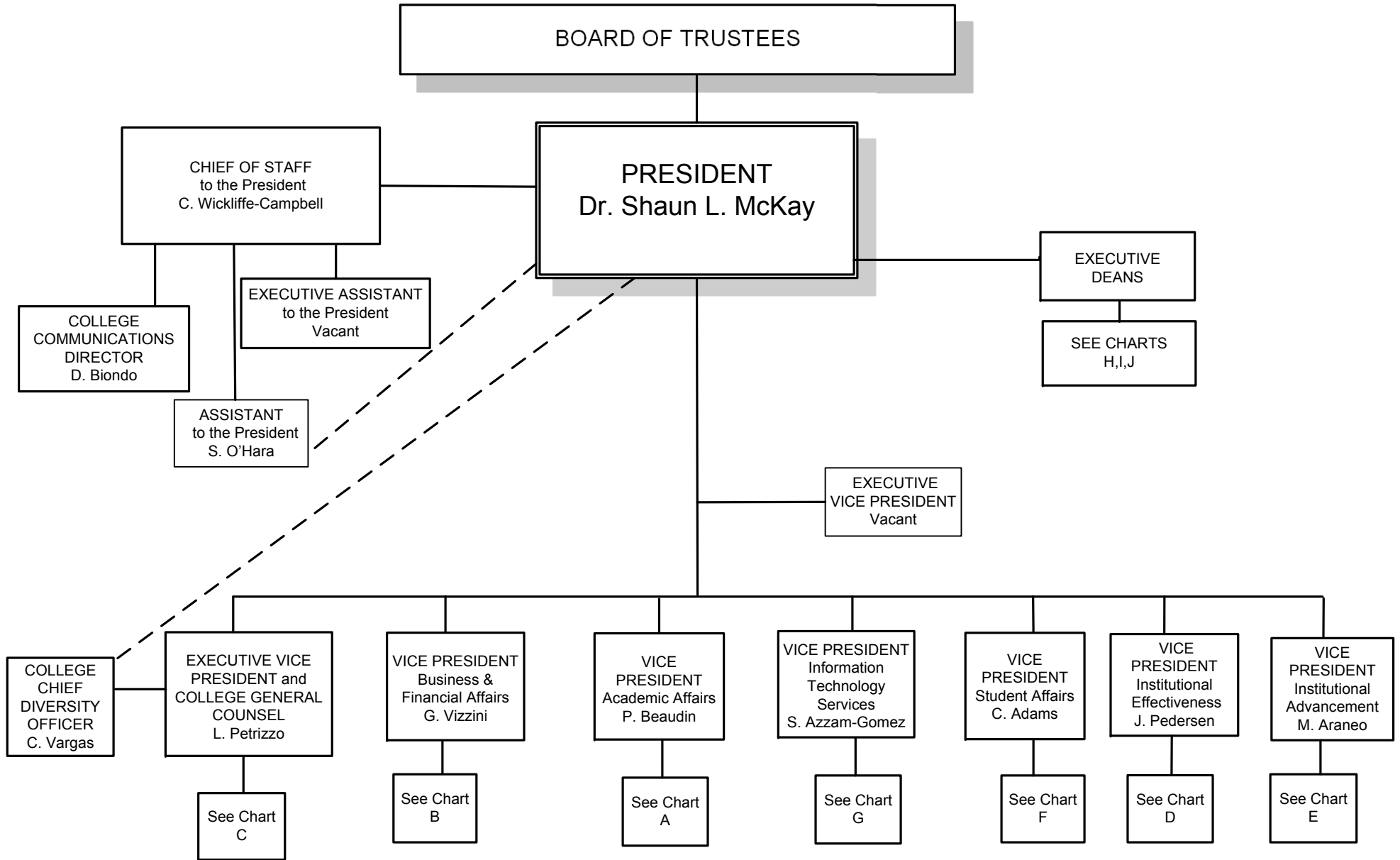


Chart A

# ACADEMIC AFFAIRS

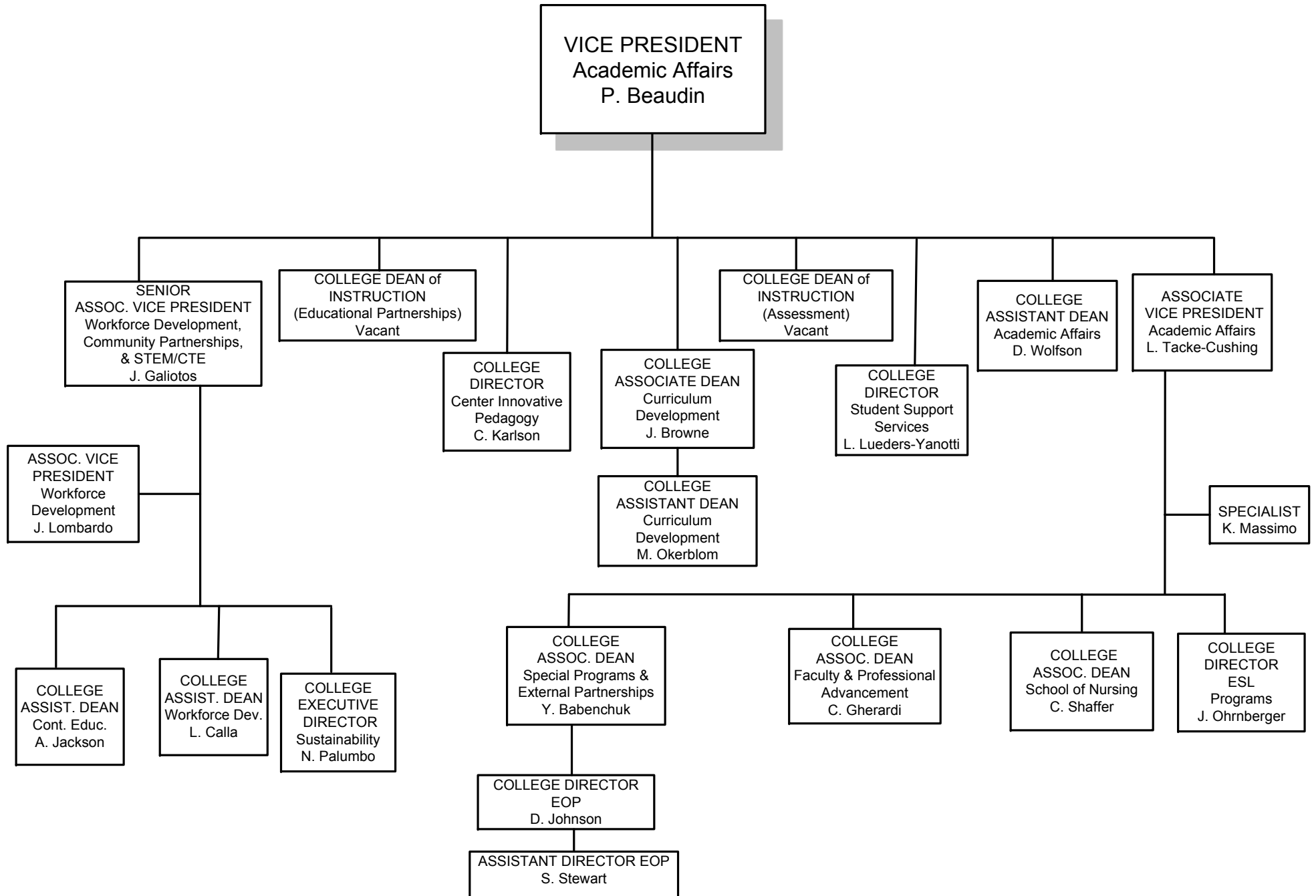


Chart B

# BUSINESS & FINANCIAL AFFAIRS

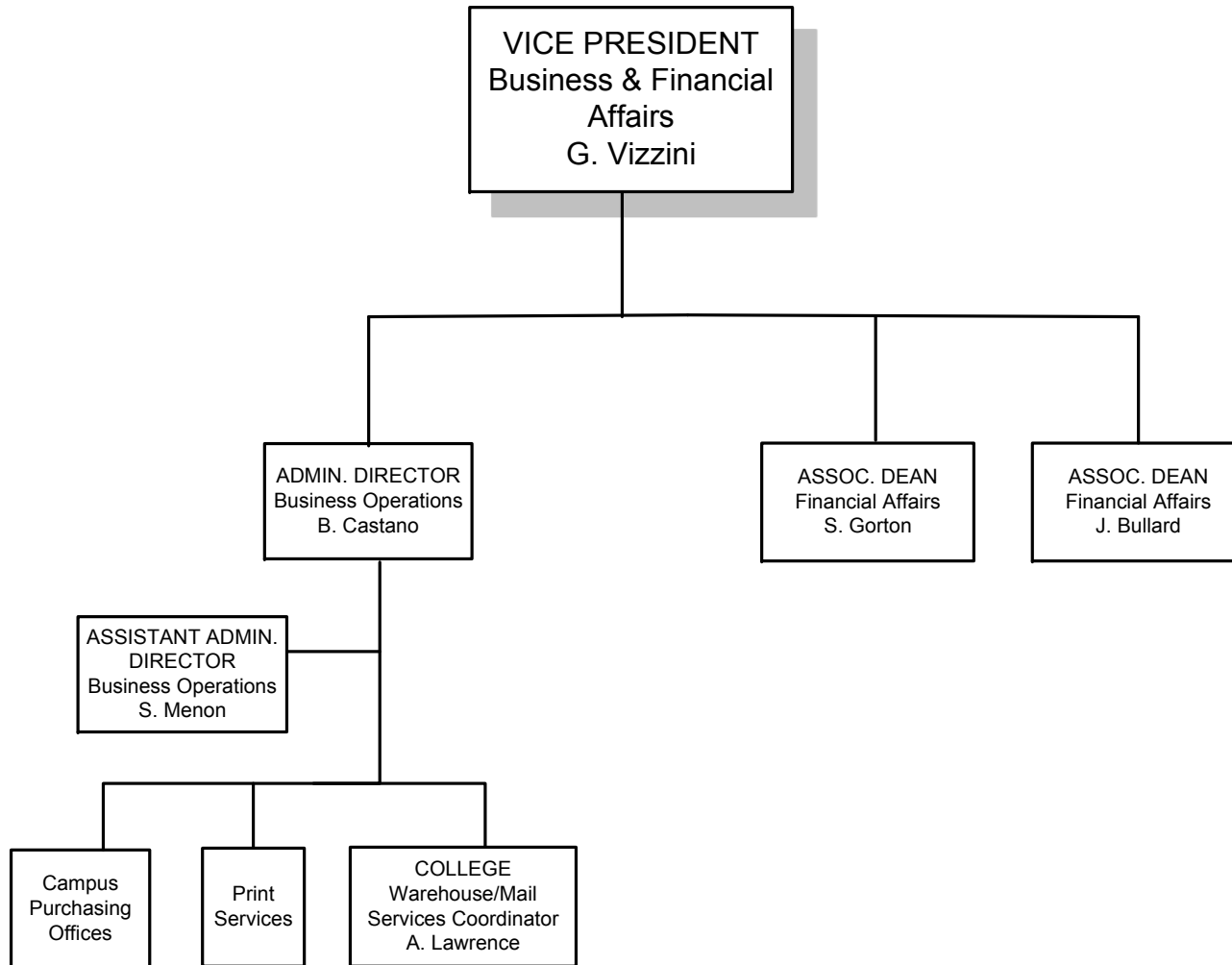
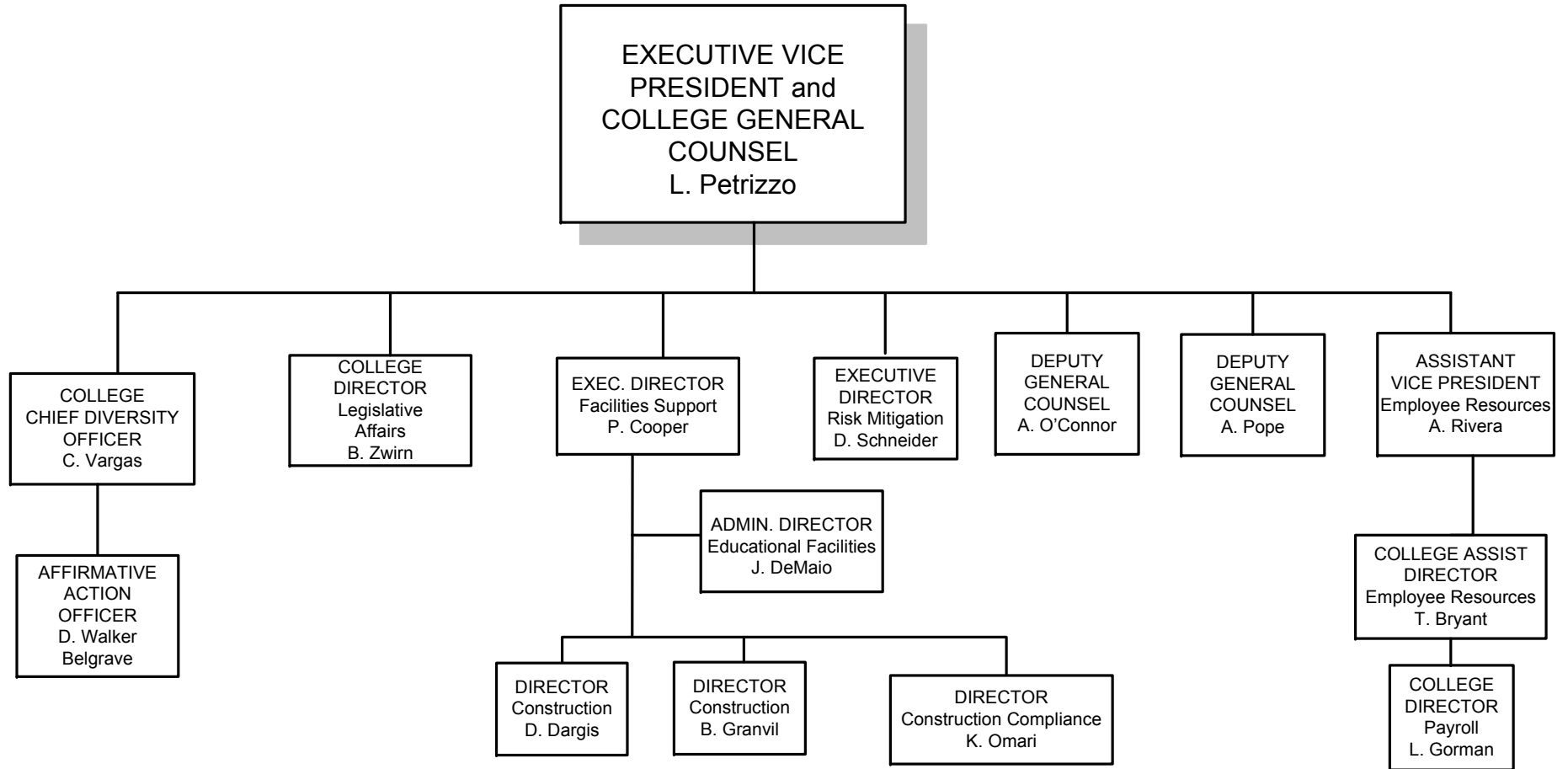
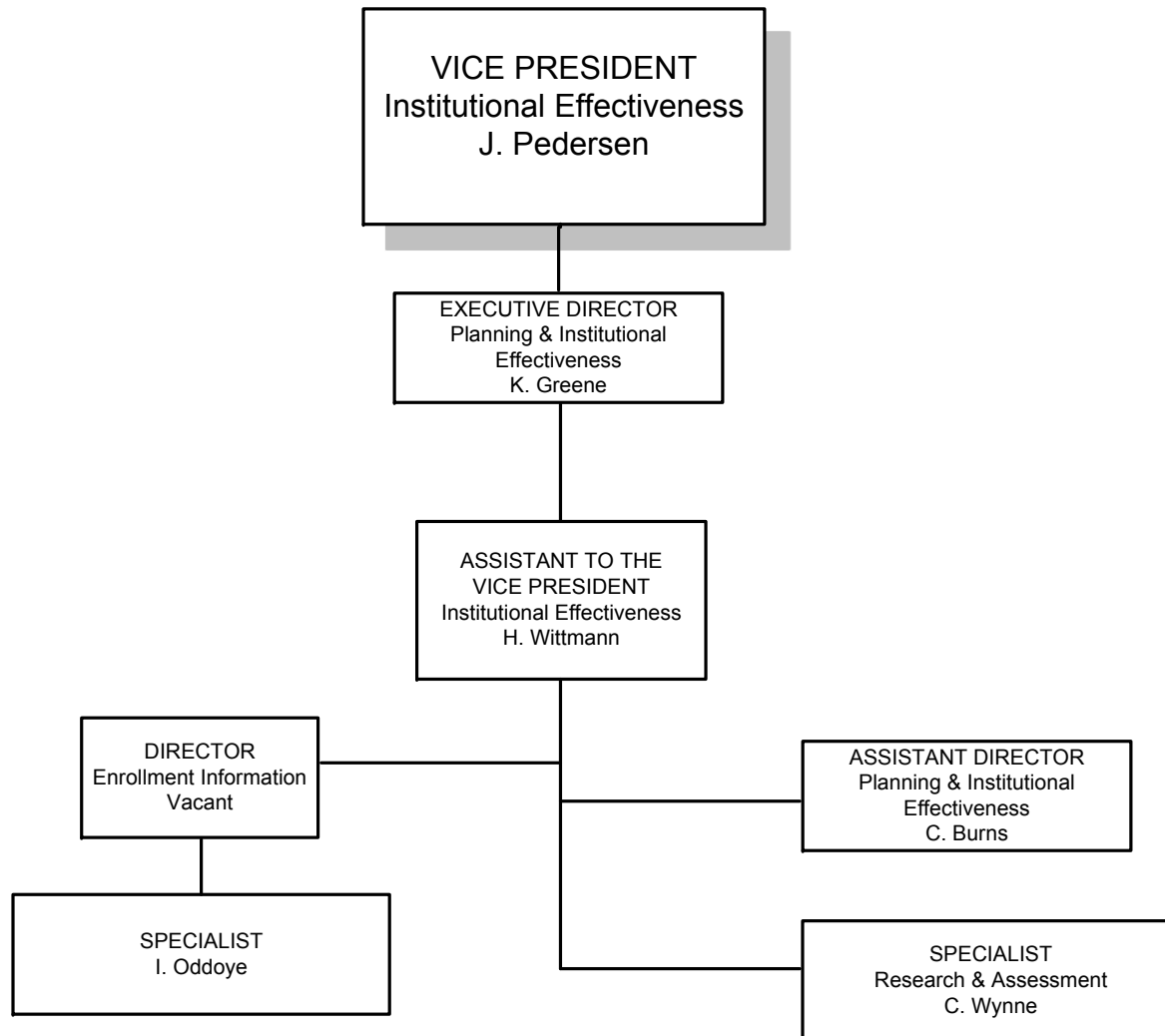


Chart C

# LEGAL AFFAIRS



# PLANNING AND INSTITUTIONAL EFFECTIVENESS



# INSTITUTIONAL ADVANCEMENT

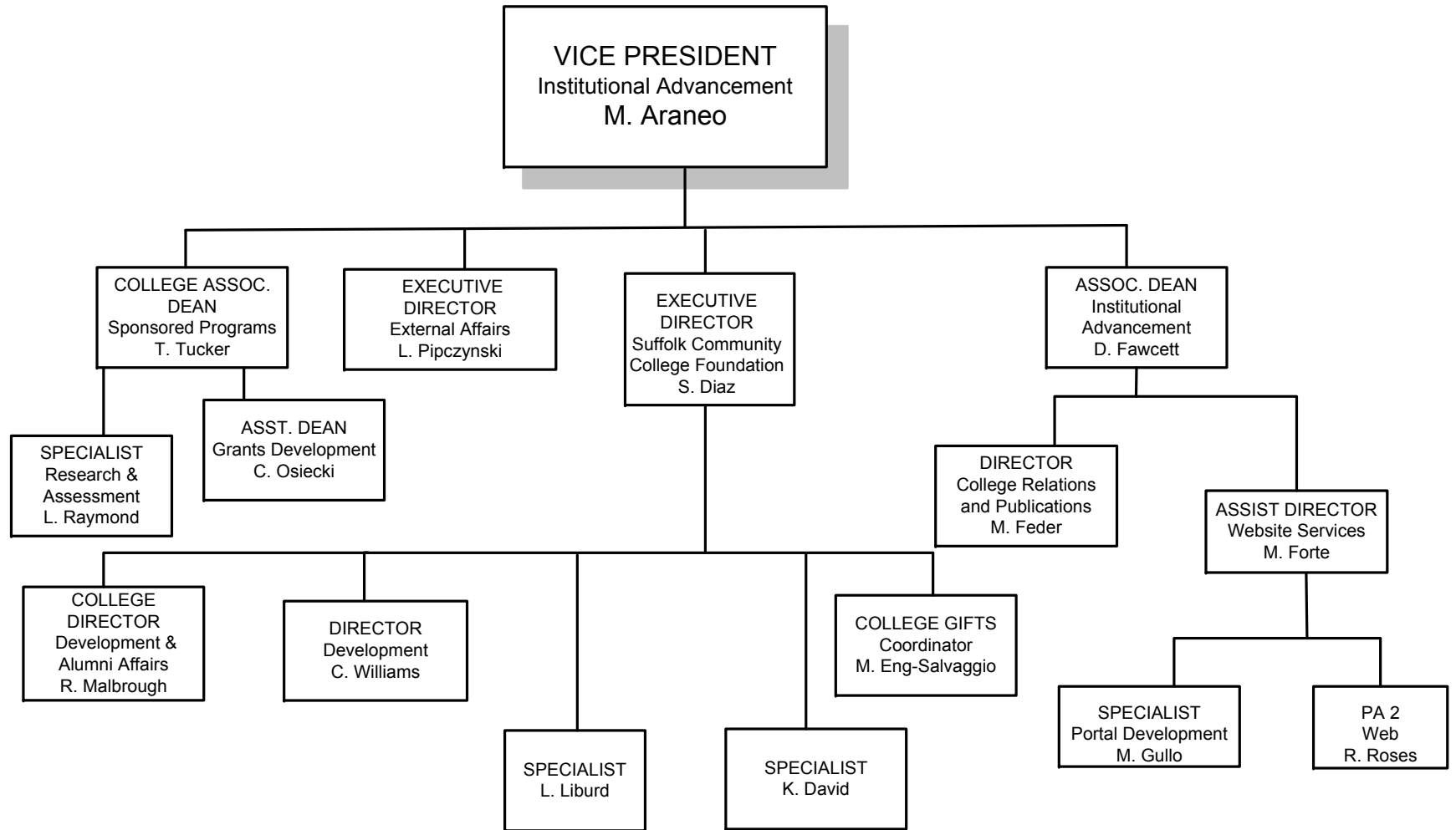
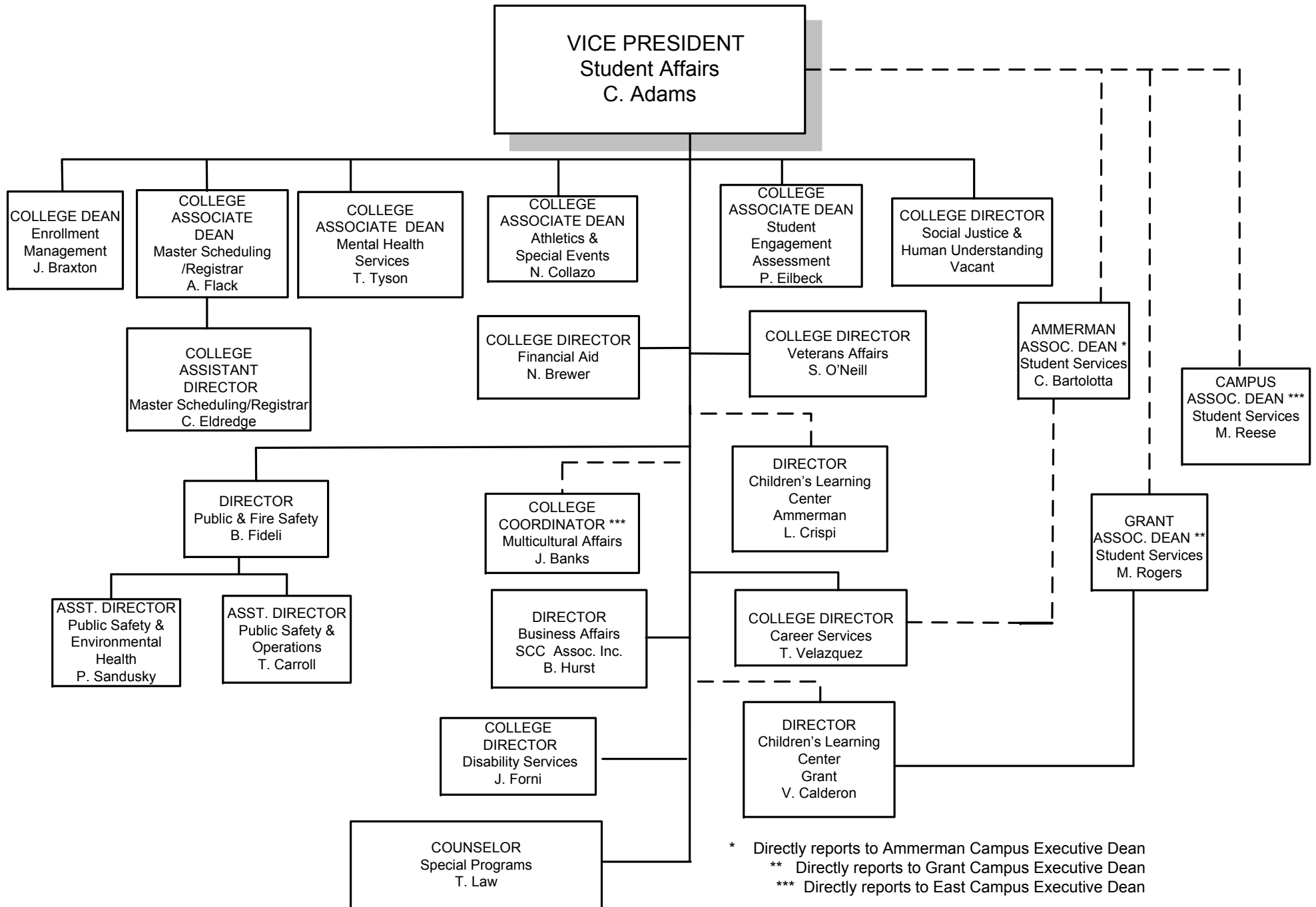


Chart F

# STUDENT AFFAIRS



\* Directly reports to Ammerman Campus Executive Dean  
 \*\* Directly reports to Grant Campus Executive Dean  
 \*\*\* Directly reports to East Campus Executive Dean

Chart G

# INFORMATION TECHNOLOGY SERVICES

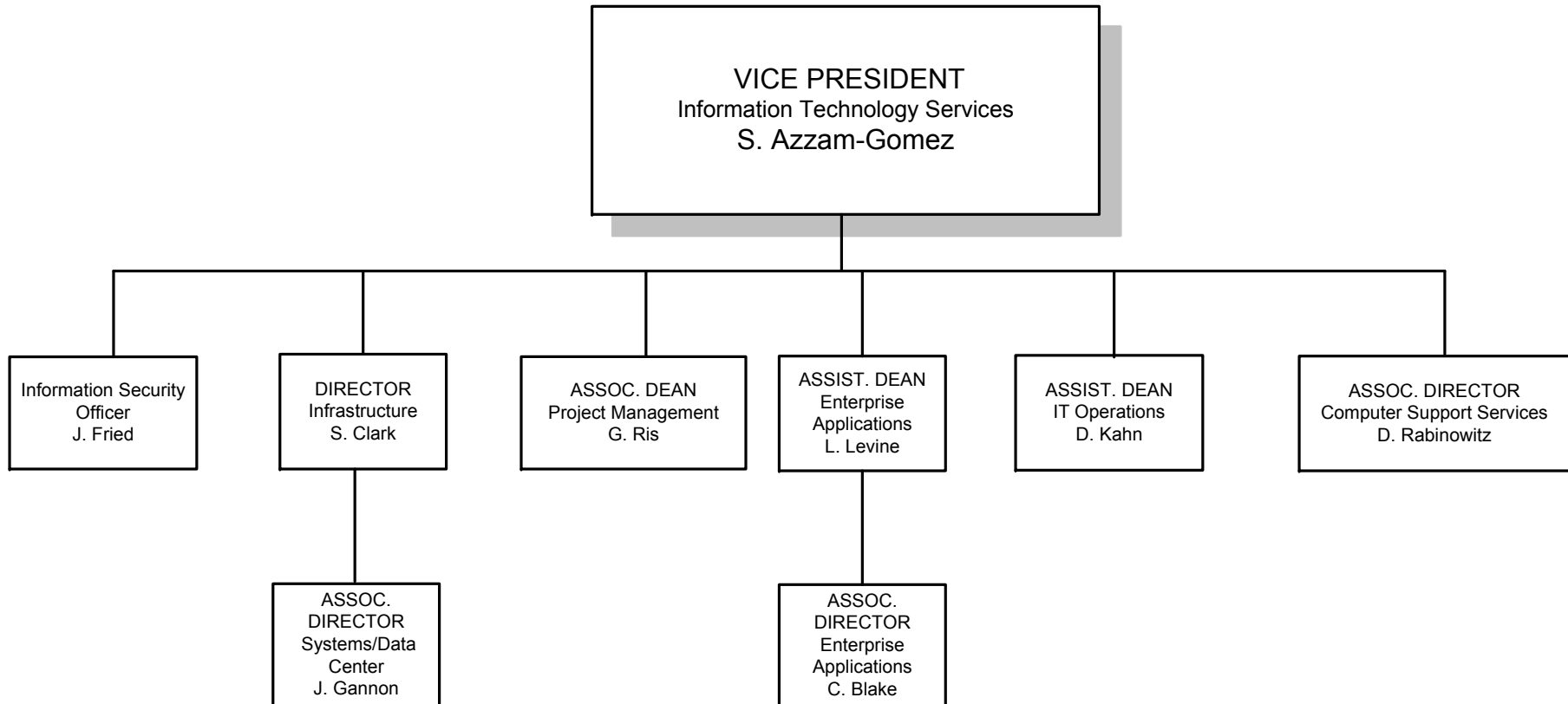
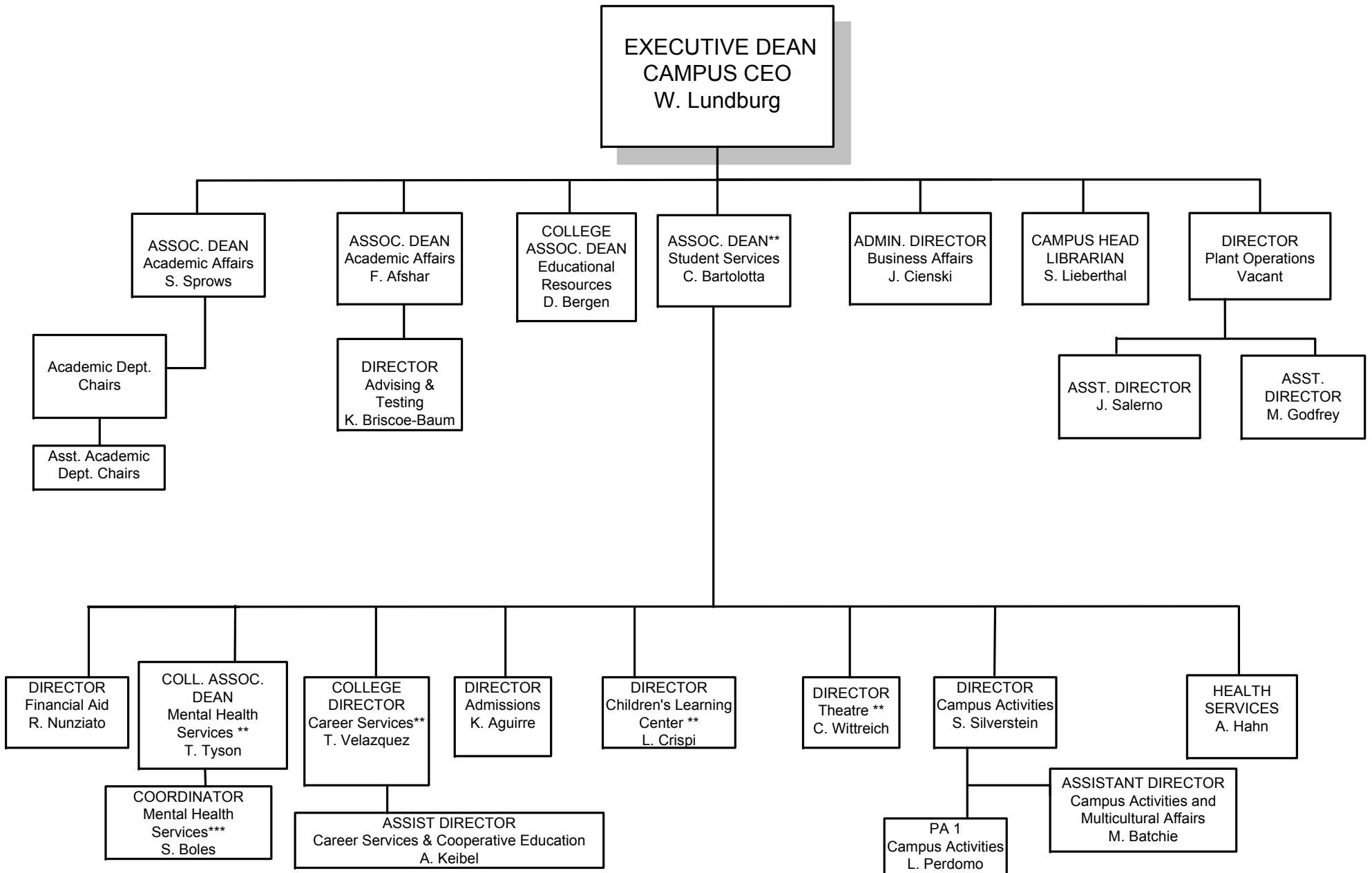




Chart H

# AMMERMAN CAMPUS

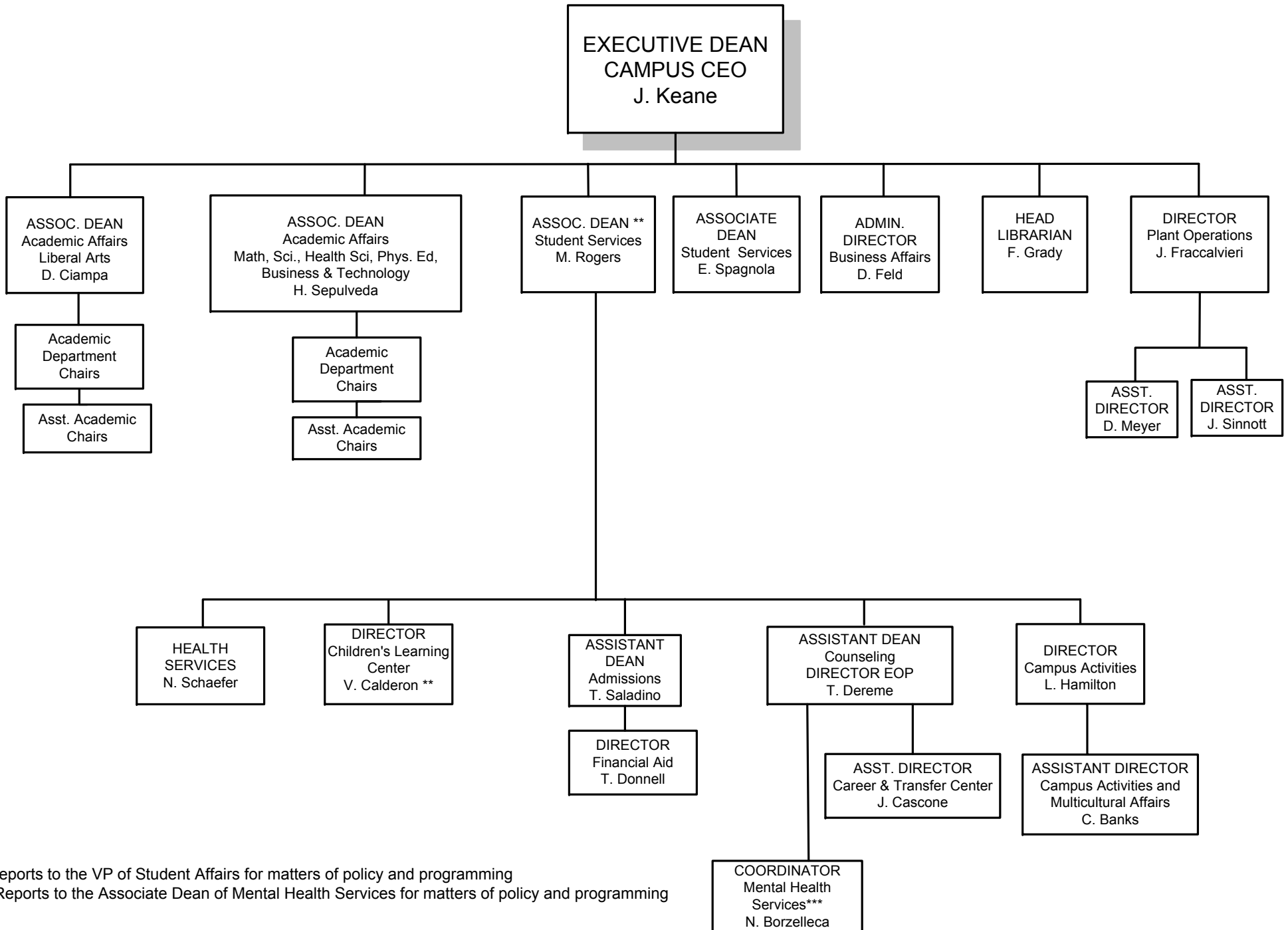


\*\* Reports to the VP of Student Affairs for matters of policy and programming

\*\*\* Reports to the Associate Dean Mental Health Services for matters of policy and programming

Chart I

# GRANT CAMPUS

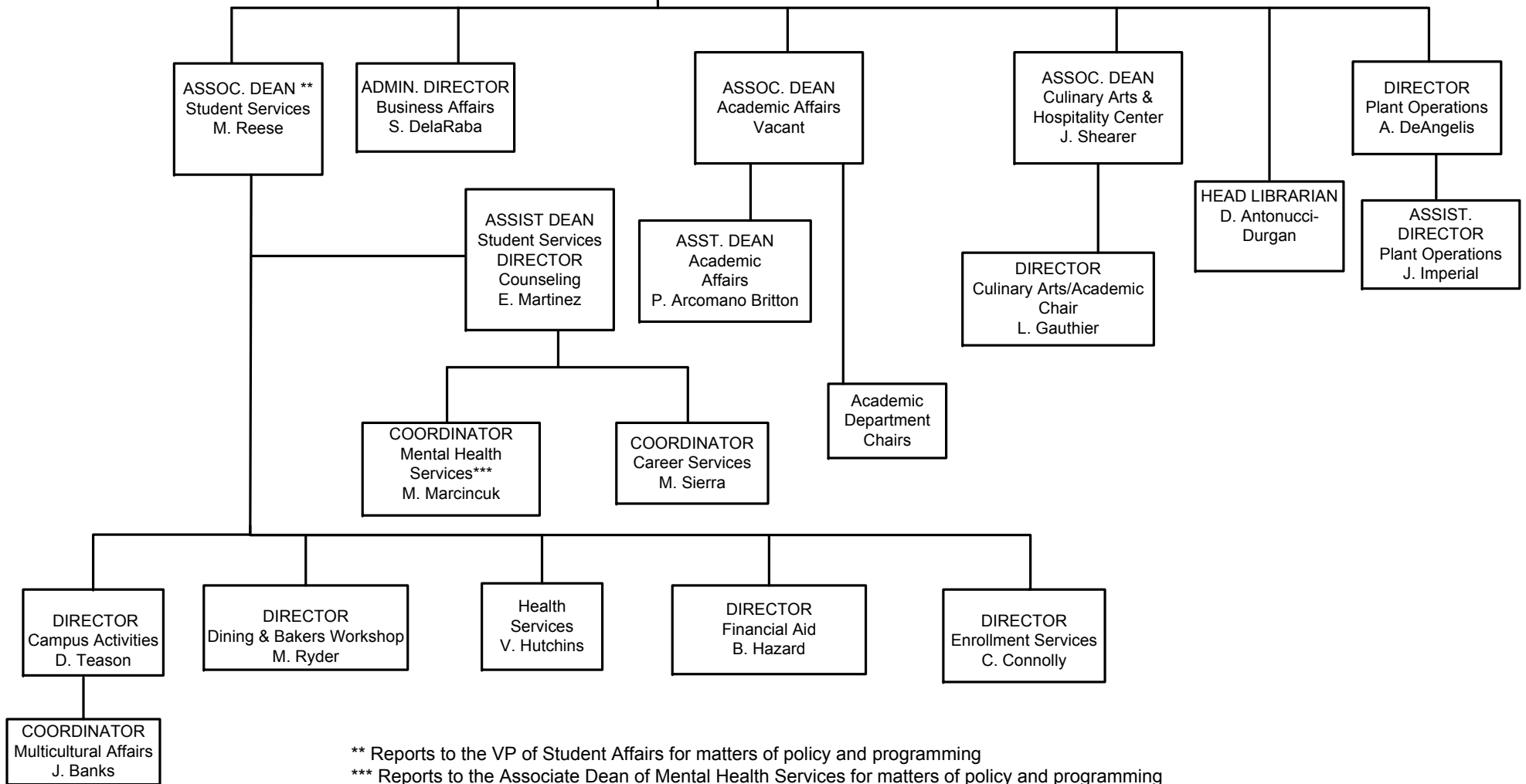


\*\* Reports to the VP of Student Affairs for matters of policy and programming  
 \*\*\* Reports to the Associate Dean of Mental Health Services for matters of policy and programming

Chart J

# EASTERN CAMPUS

EXECUTIVE DEAN  
CAMPUS CEO  
I. Rios



\*\* Reports to the VP of Student Affairs for matters of policy and programming

\*\*\* Reports to the Associate Dean of Mental Health Services for matters of policy and programming