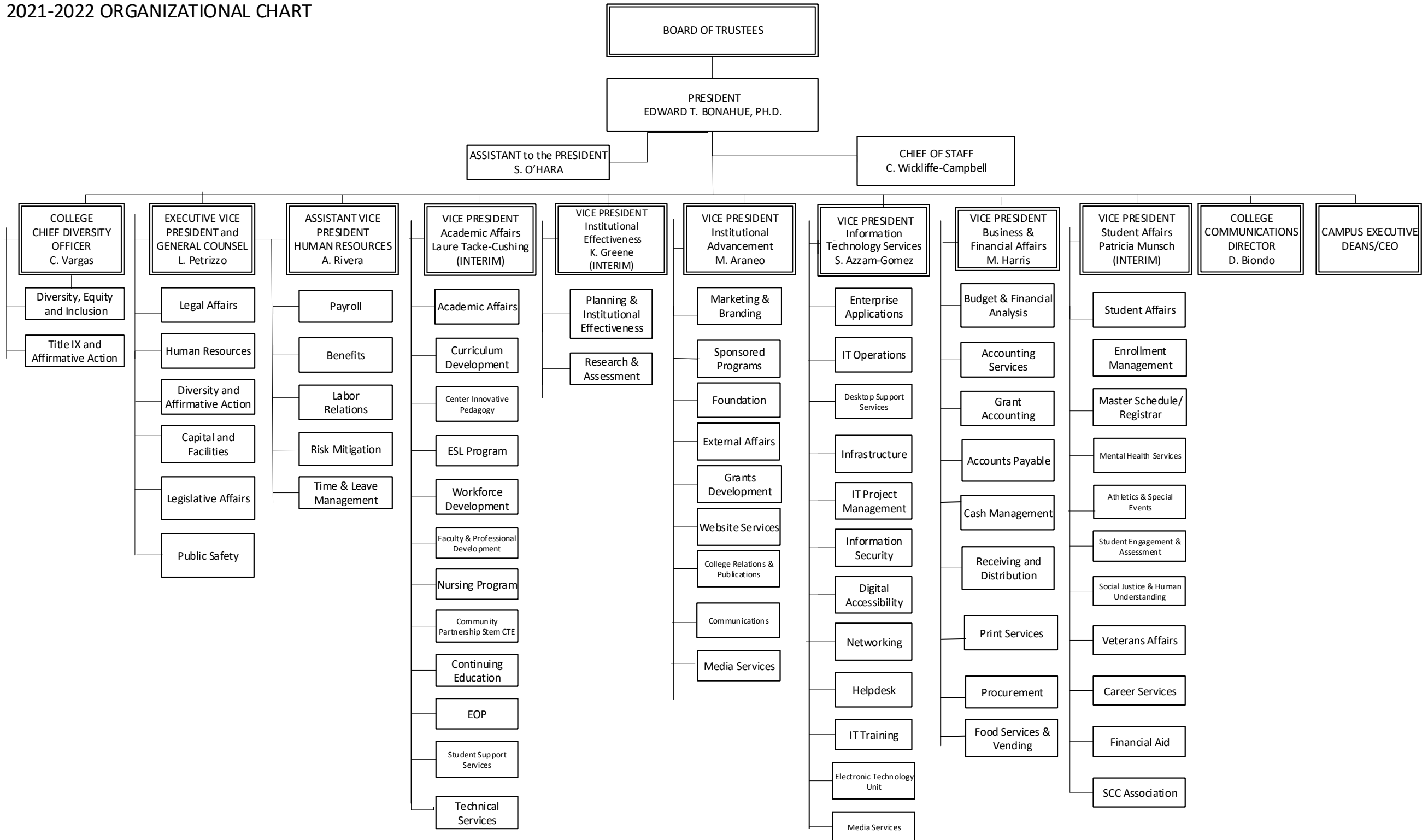
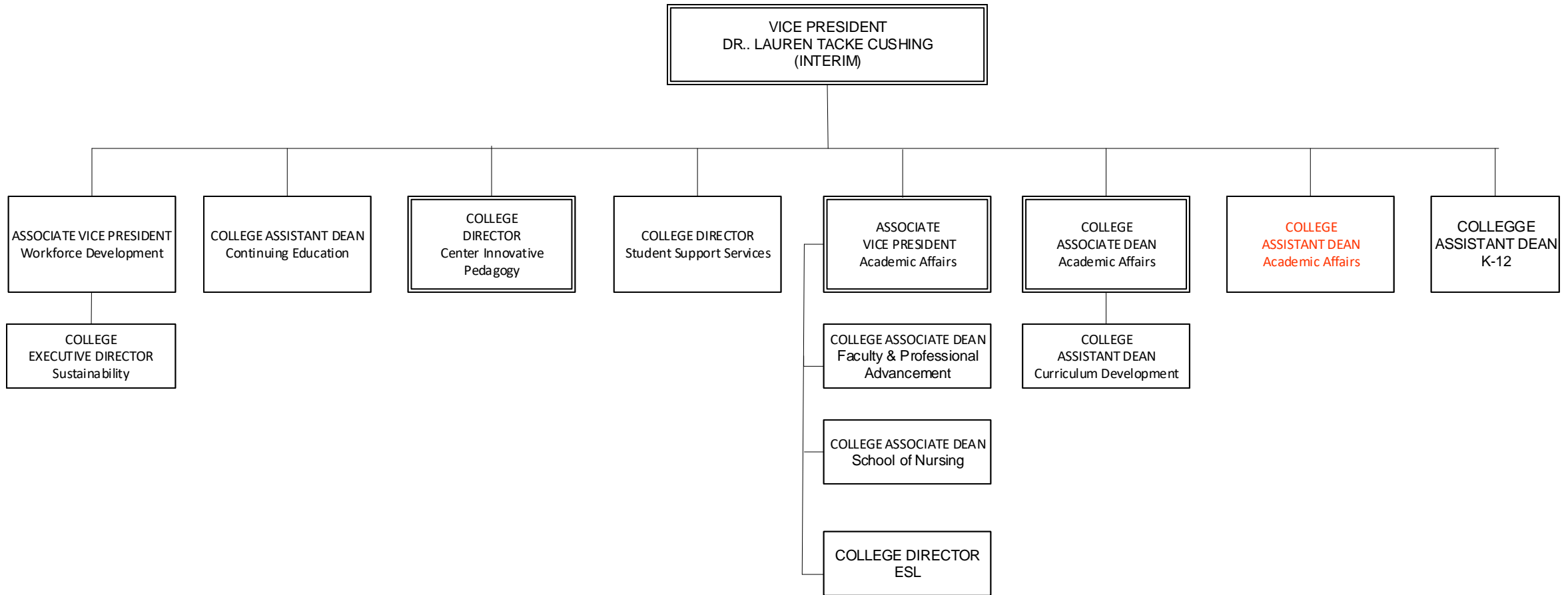


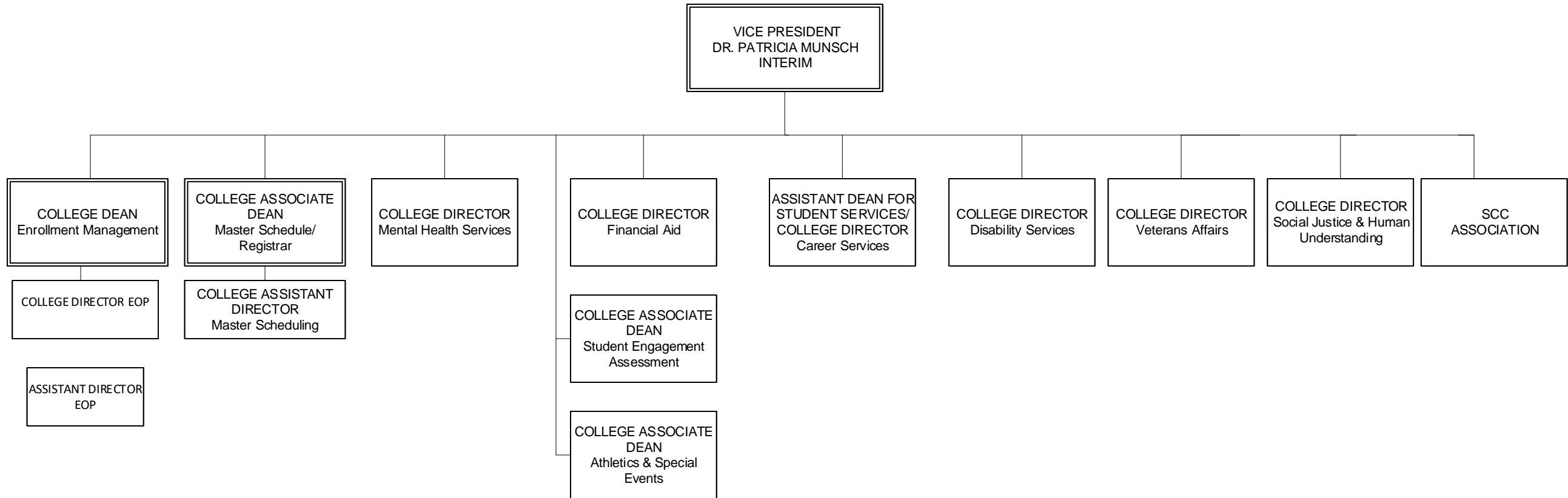
2021-2022 ORGANIZATIONAL CHART



ACADEMIC AFFAIRS

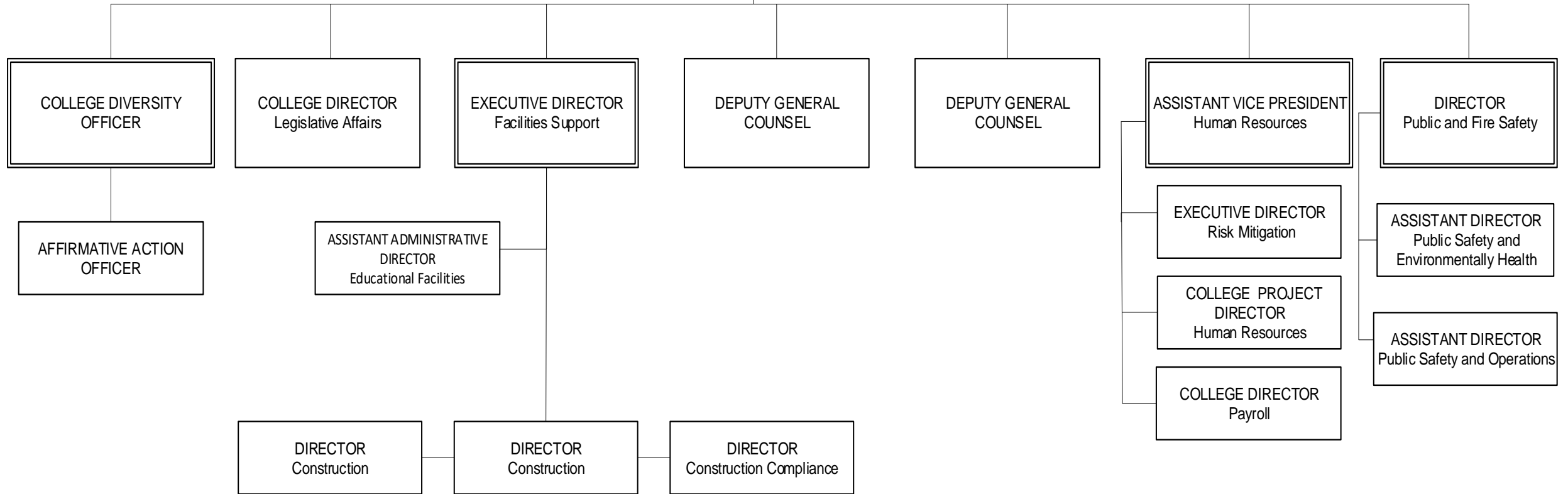


STUDENT AFFAIRS



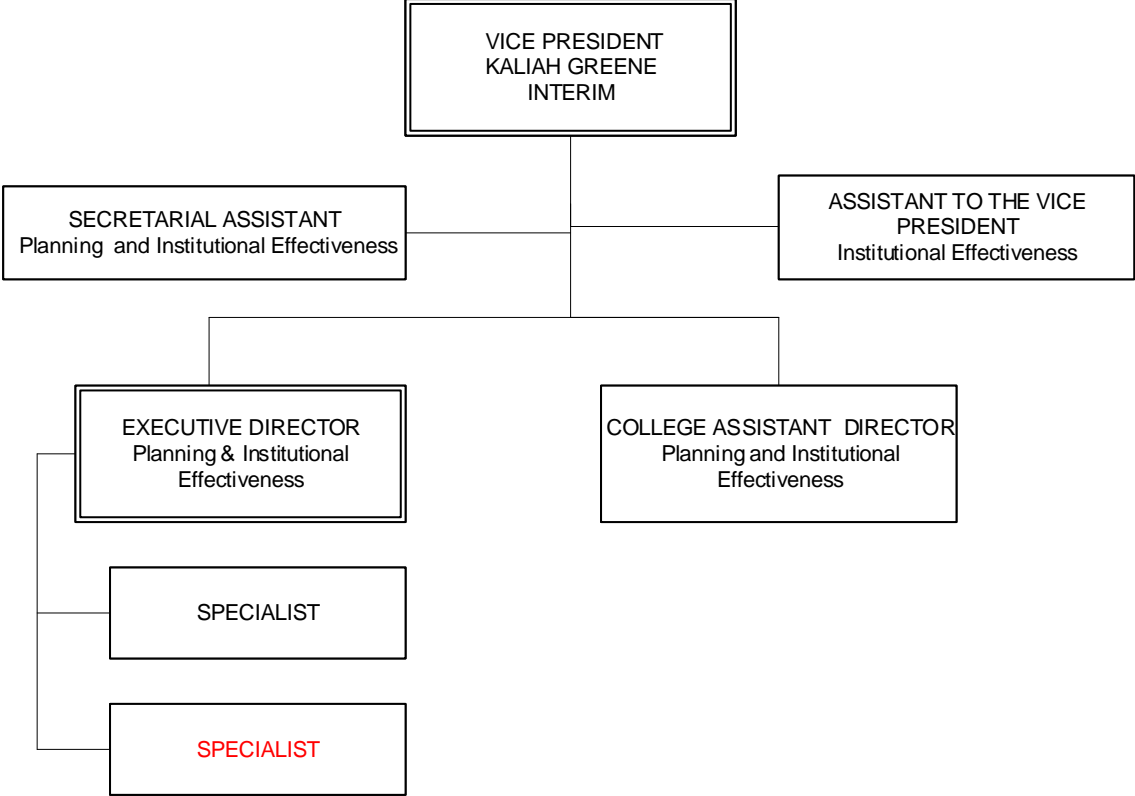
LEGAL AFFAIRS

GENERAL COUNSEL/EXECUTIVE VICE
PRESIDENT
LOUIS J. PETRIZZO



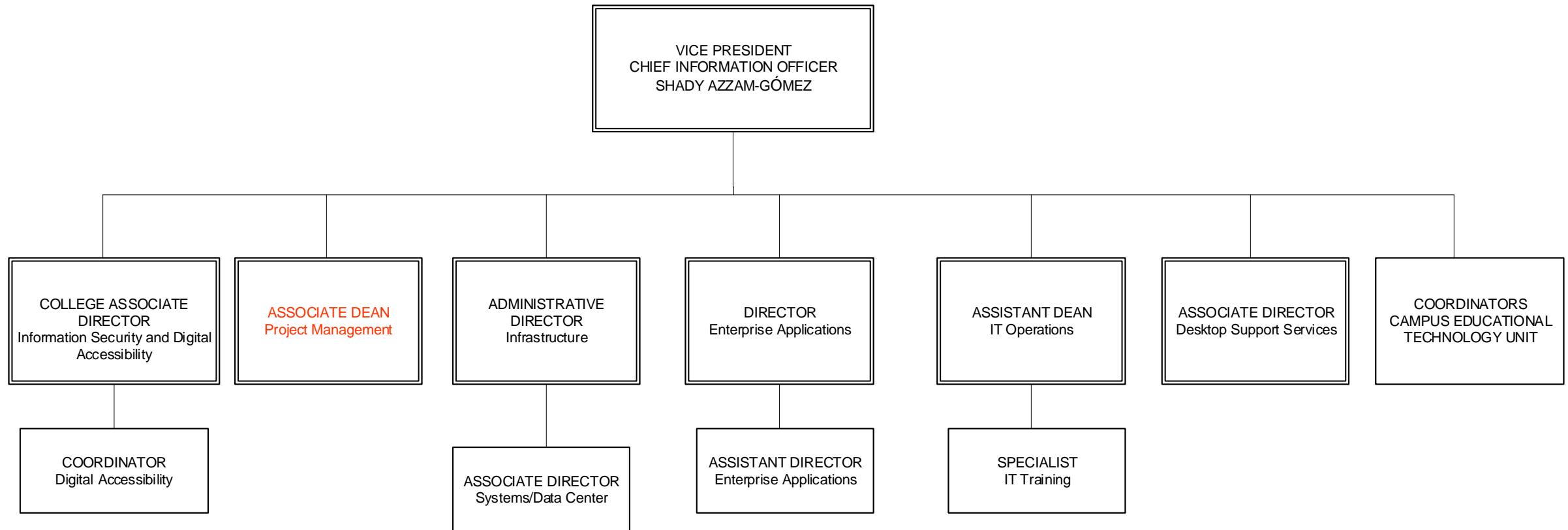
PLANNING AND INSTITUTIONAL EFFECTIVENESS

vacant

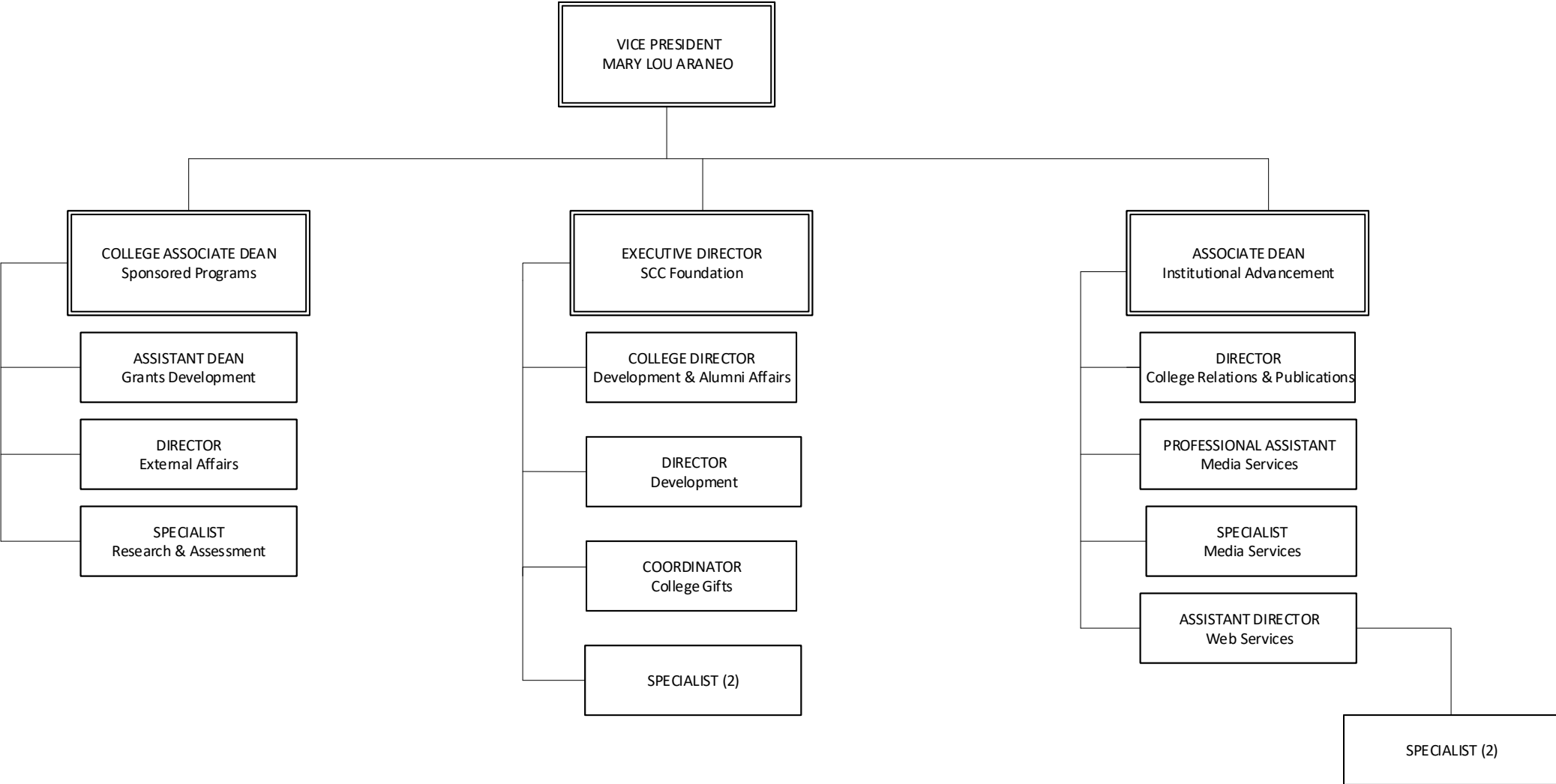


*vacant

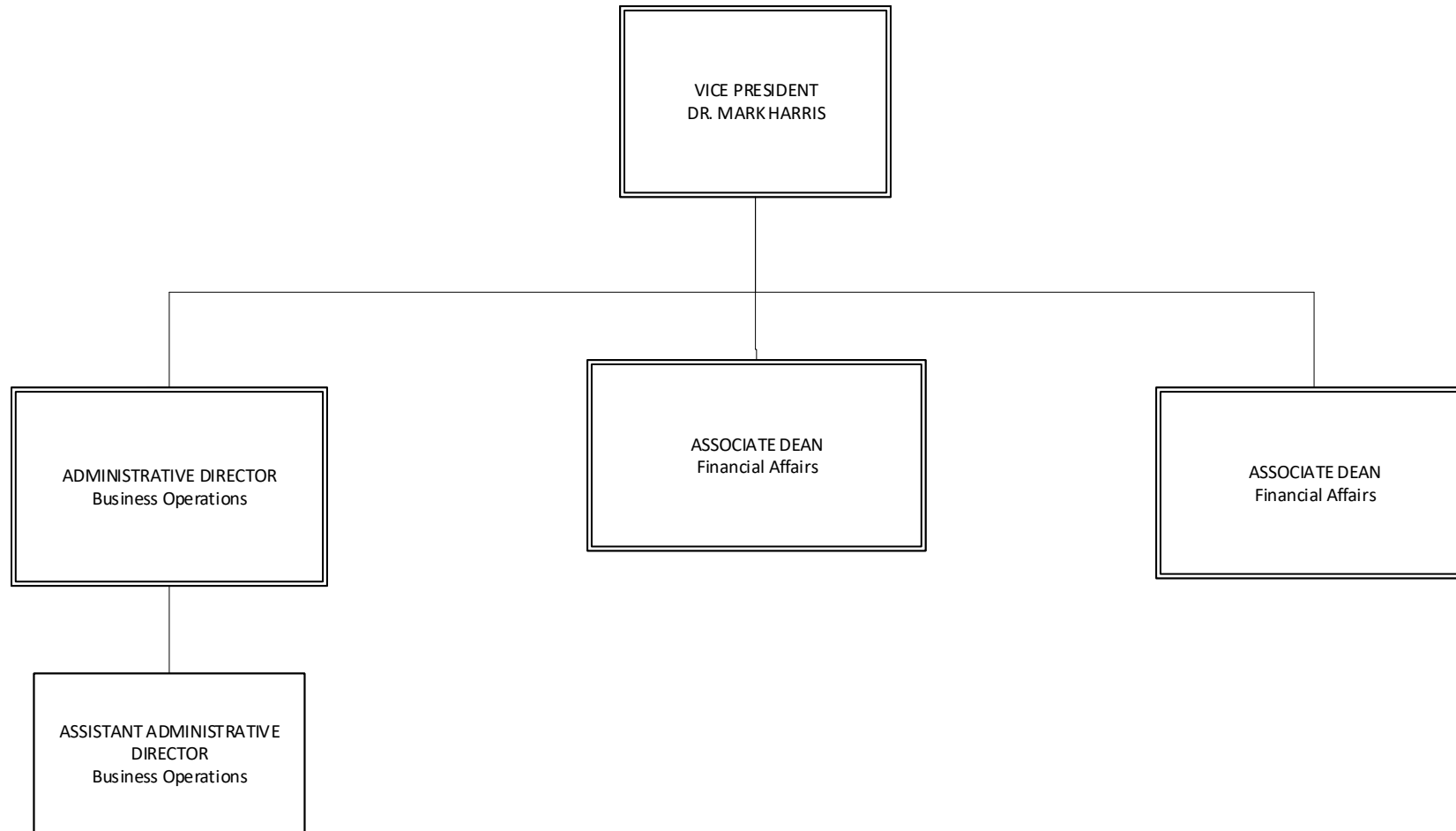
INFORMATION TECHNOLOGY SERVICES



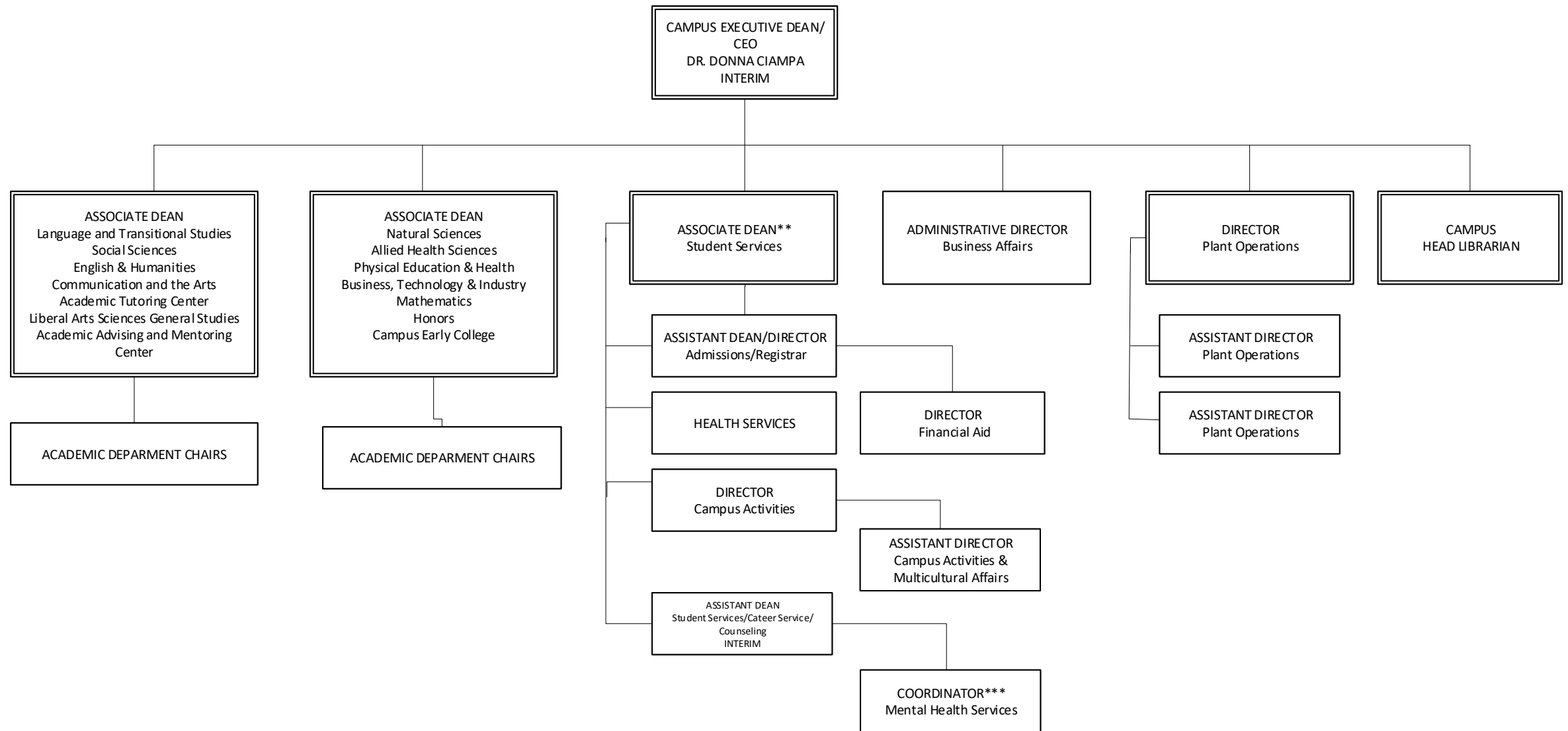
INSTITUTIONAL ADVANCEMENT



BUSINESS AND FINANCIAL AFFAIRS



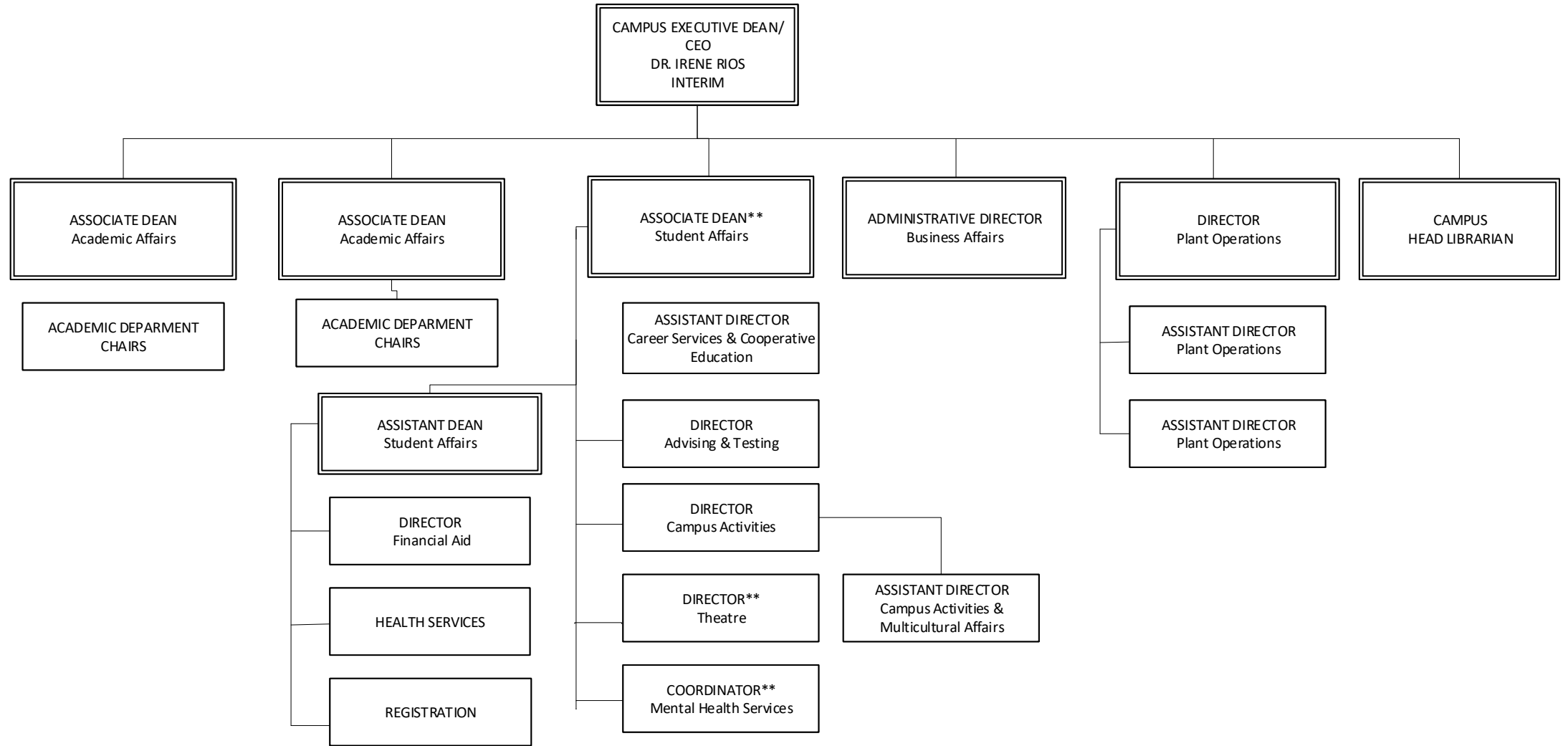
MICHAEL J. GRANT CAMPUS



** Reports to the VP of Student Affairs for matters of policy and programming

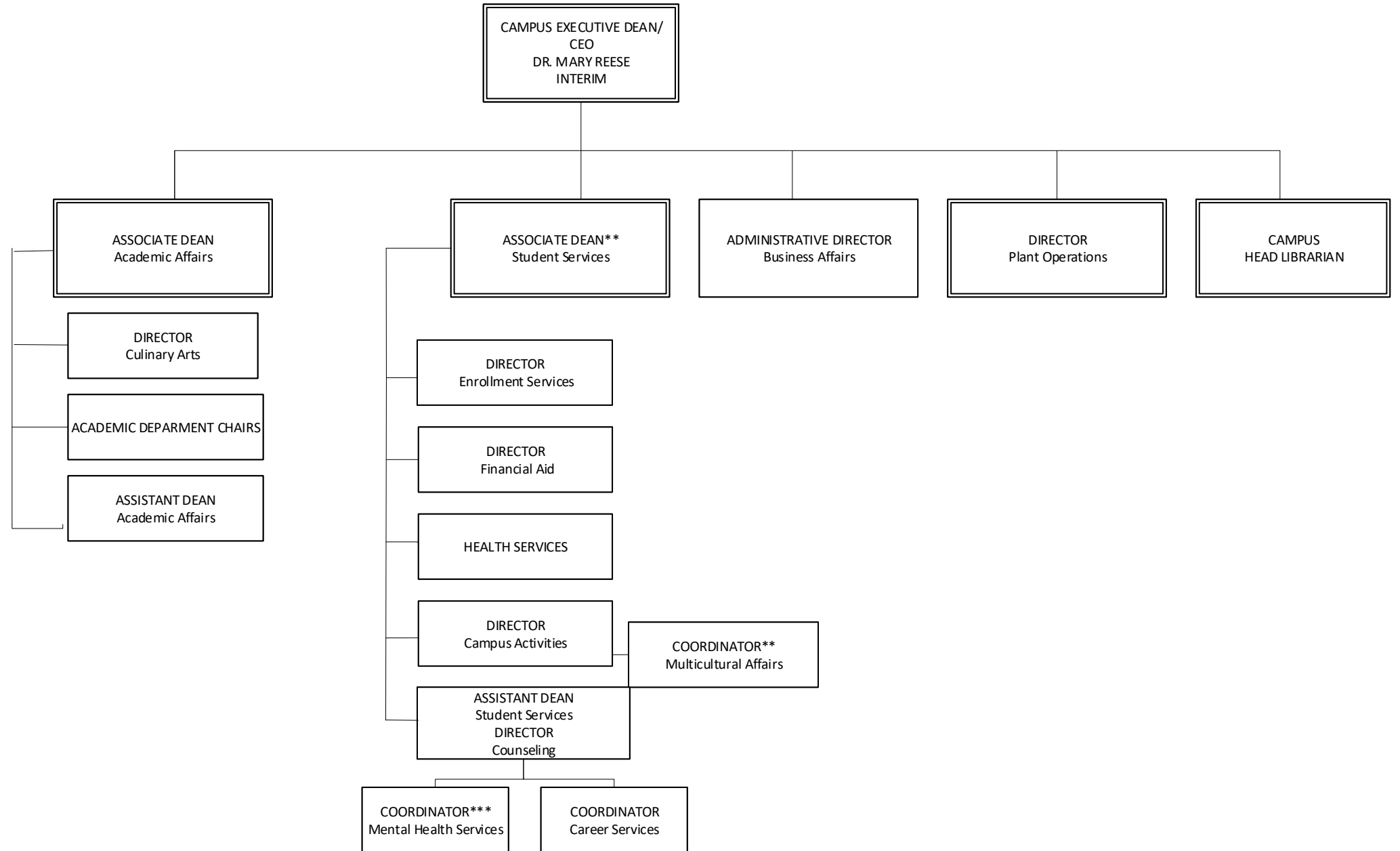
*** Reports to the Associate Dean of Mental Health Services for matters of policy and programming

AMMERMAN CAMPUS



** Reports to the VP of Student Affairs for matters of policy and programming

EASTERN CAMPUS



** Reports to the VP of Student Affairs for matters of policy and programming

*** Reports to the Associate Dean of Mental Health Services for matters of policy and programming