

# SCCC Re-Elects Theresa Sanders, Jim Morgo and Bryan Lilly

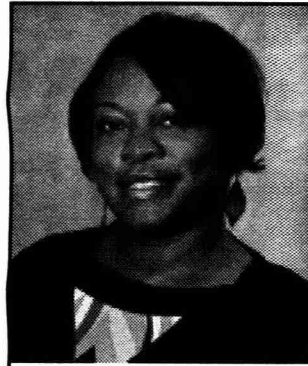
The Suffolk County Community College Board of Trustees re-elected its officers, Chair Theresa Sanders – the first African American woman to hold the post; Vice Chair Jim Morgo and Secretary Bryan Lilly at the board's regular meeting on June 16, 2016.

Sanders, a board member for six years and president and CEO of the Urban League of Long Island, Morgo and Lilly were unanimously re-elected. Morgo joined the board in 2012 and Lilly in 2010.

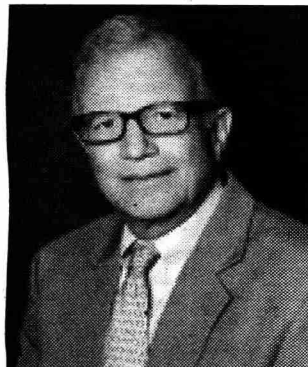
"Under the leadership of Board Chair Theresa Sanders, our Trustees have been able to further strengthen this College. By diligently maintaining their focus on forming policies and making decisions that benefit our students, we have been able to maintain the integrity of our teaching and learning environment. Suffolk County residents have been able to access a nationally recognized higher education institution that can meet and surpass their expected education and training goals, while providing a foundation for the benefits of lifelong learning. Chair Sanders' colleagues on the Board have entrusted her to continue her leadership along this path. My administration and I look forward to building upon our collective legacy of success," said Suffolk County Community College President Dr. Shaun L. McKay.

"I offer congratulations to all of the re-elected officers of Suffolk Community College's Board of Trustees," said County Executive Steve Bellone. "The commitment that you make to ensure that the College is continually meeting the needs of its students is immeasurable. I thank you for your service and leadership and look forward to ongoing collaborations as we aim to produce the best and brightest of Suffolk County," said Suffolk County Executive Steve Bellone.

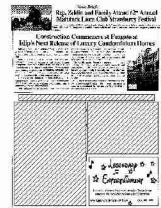
"Theresa Sanders has always been an inspiration for our young people and a tireless advocate for ensuring that they have access to a quality, affordable college education here at home," said Suffolk County



**Theresa Sanders**



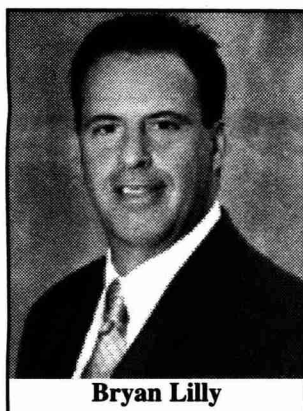
**Jim Morgo**



Legislature Presiding Officer DuWayne Gregory. "Congratulations to her on her re-election as chair of this important board, as well as to re-elected Vice Chair Jim Morgo and Secretary Bryan Lilly."

"I can't help but feel honored and privileged to have the opportunity to serve Suffolk County Community College in this special way," Suffolk County Community College Board of Trustees Chair Sanders said. "I know our Board, the administration, faculty and staff remain committed to providing opportunity for all through high quality education at a cost that is affordable to all."

Suffolk County Community College has 27,000 students enrolled at three campuses in Selden, Brentwood and Riverhead, and is the largest community college in New York State. The college awards Associate in Arts (A.A.), Associate in Science (A.S.), and Associate in Applied Science (A.A.S.) degrees and professional certificates in 100 programs of study.



**Bryan Lilly**